

Microseismic Monitoring Report

Sulphur Mines Salt Dome – Louisiana (US)

Borehole and Surface Seismic Arrays

Report Period: January 2026

Reference: 2634399-SUL-MR-260101

Report Review: Michael Reese – Baker Hughes LBPG #1428

LBPG review using results from Baker Hughes and Nanometrics Inc.



This review is based solely on microseismic monitoring results provided in the Baker Hughes January 2026 monthly report from the Baker Hughes microseismic team. The report results were passed through the Baker Hughes QA/QC microseismic processing workflows for accuracy and repeatability. No other information, data or observations from the Sulfur Mines Salt Dome operations were provided to support Baker Hughes report results for this PG review. Interpretation of the events is performed by Sulphur Mines Salt Dome. Details of processing and events are provided in the Baker Hughes January 2026 report (appended to this cover letter).

Seismic monitoring and data processing at Sulphur Mines Salt Dome combines the borehole and surface seismic arrays data for microseismic event processing. This includes the follow:

- Nanometrics operates and performs seismic processing for the surface seismic array using broadband network stations. Baker Hughes accesses the real time surface array waveform data and integrates it into the borehole waveform data for processing the microseismic location and magnitude. Baker Hughes provides event locations and magnitudes for all seismic events at Sulphur Mines Salt Dome using the combined borehole arrays and surface array waveform data.

Alert Level Status: Low (Green)

There was no seismic event with a magnitude >0.5 in the AOI and less than 30 MEQ per day in AOI with magnitudes > -1 , thus maintaining the defined alert level status at Low (green).

With the borehole arrays, activity increased with 133 detections / 71 located events were observed in January 2026 compared to 123 detections / 44 located events observed in December 2025. There were 36 events reported in the AOI. Within AOI caverns: AOI-PPG-06 (4 event), AOI-PPG-07 (8 events), AOI-LGS-02 (8 event), AOI-PPG-16 (3 event), AOI-PPG-04 (2 event), AOI-LGS-01 (1 event), AOI Caprock (5 event), and AOI-Flank (5 event). There were 35 events outside the AOI with Flank (20 event), Caprock (2 event), PPG-16 (12 events) and LGS-02 (1 event). The maximum recorded magnitude of -0.4 in AOI-PPG-16 (3146 ft.) and -0.4 on salt flank (5542 ft). Notable increase in activity and magnitude inside/outside AOI in caverns PPG-16, PPG-07, LGS-02, and salt flank. The depths of all observed events from 1050 ft to 5920 ft.

MICROSEISMIC MONITORING

MONTHLY REPORT: January 2026

Sulphur Mines Salt Dome – Louisiana (US)

2634299-SUL-MR-260101

Client / Site	Sulphur Mines Salt Dome
Recipient	Trisha Mier (Westlake) Coleman Hale (Lonquist) Andrew Jupe (Altcom)
Reference	2634299-SUL-MR-260101
Period	from 2026/01/01 to 2026/01/31

Revision history

Version	Date	Issued by	Verified by	Approved by	Description
1.0	2026/02/13	E. FORTIER	E. BARBIERI	JM. EMBRY	Monthly report

Acronyms

Acronym	Signification
N/A	Not Applicable
PGV	Peak Ground Velocity
AOI	Area Of Interest

Table of contents

Summary	4
Introduction	5
I. Alert Level Status	5
II. Seismic Network	5
Microseismic activity during reporting period.....	6
I. Distribution of the microseismic event.....	7
Event Location.....	9
I. All event locations (inside and outside AOI)	9
II. Event Locations in AOI.....	11
Magnitude and depth distribution	14
Microseismic history from the beginning of the acquisition	16
I. History of detections.....	16
II. Historical magnitude distribution.....	17
III. History of the event locations.....	18
History in Cap-Rock and on the Flank.....	18
History around the caverns	19
APPENDIX 1 – Alert level criteria	21
APPENDIX 2 – Network Coordinates	21
APPENDIX 3 – Catalogue of located events.....	23

Summary

Network & IT status	System Uptime	100 % - Borehole arrays 100 % - Surface Network
	Digitizers connectivity	Continuous, with no acquisition stops
	Sensors / Noise level	<ul style="list-style-type: none"> • Borehole arrays: 100 % <ul style="list-style-type: none"> ○ PPG-6 (6 levels) → noise level: 5 to 20 nm/s (RMS) except sensors PPG-6.1Z with 60 nm/s (up to 250 nm/s since 27/01) and PPG-6.2XZ with 100 nm/s since 27/01. ○ PPG-2 (6 levels) → noise level: 5 to 30 nm/s (RMS) except sensors PPG-2.3 [40; 300nm/s] and PPG-2.6 [20; 70 nm/s] • Surface receivers: 100 % <ul style="list-style-type: none"> ○ 6 sensors (3-axis) → N/A
Seismic activity	BOREHOLE ARRAY	
	Detections (of which) Located Max magnitude Max PGV Min depth Max depth	133 71 -0.4 0.0120 mm/s 1,050 (ft) 5,950 (ft)
	Number of alerts in the month	0 – No alert triggered in January 2026

PGV = Peak Ground Velocity – Maximum vibration measured on the sensors (mm/s)

Introduction

I. Alert Level Status

During January 2026 the alert level status was: Low (Green). Alert level criteria are listed in Appendix 1.

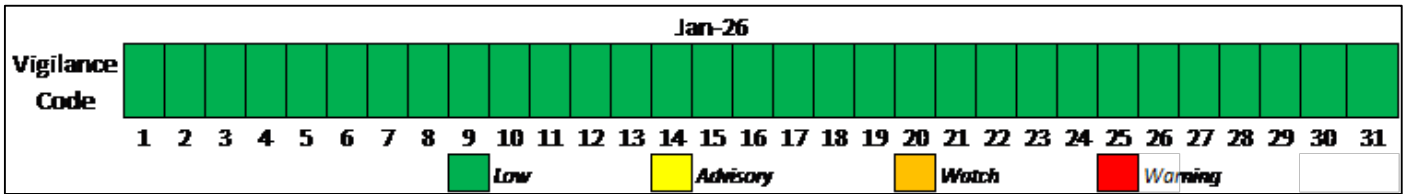


Figure 1: Alert status level during January 2026.

II. Seismic Network

Microseismic monitoring in Sulphur Mine Salt Dome is executed by:

- **Two borehole arrays**
 - Baker Hughes Microseismic Services group operates, and processes data of the borehole seismic arrays located in PPG Well No. 006-X and PPG Well No. 020. The seismic array locations are shown in Figure 2, and the coordinates are listed in the Appendix 2. The borehole arrays were fully functional in April 2024.
- **A surface network, composed by 6 Broadband Trillium**
 - Nanometrics operates the surface broadband array, while Baker Hughes processes the data. The broadband station locations are shown in Figure 2 and listed in Appendix 2.

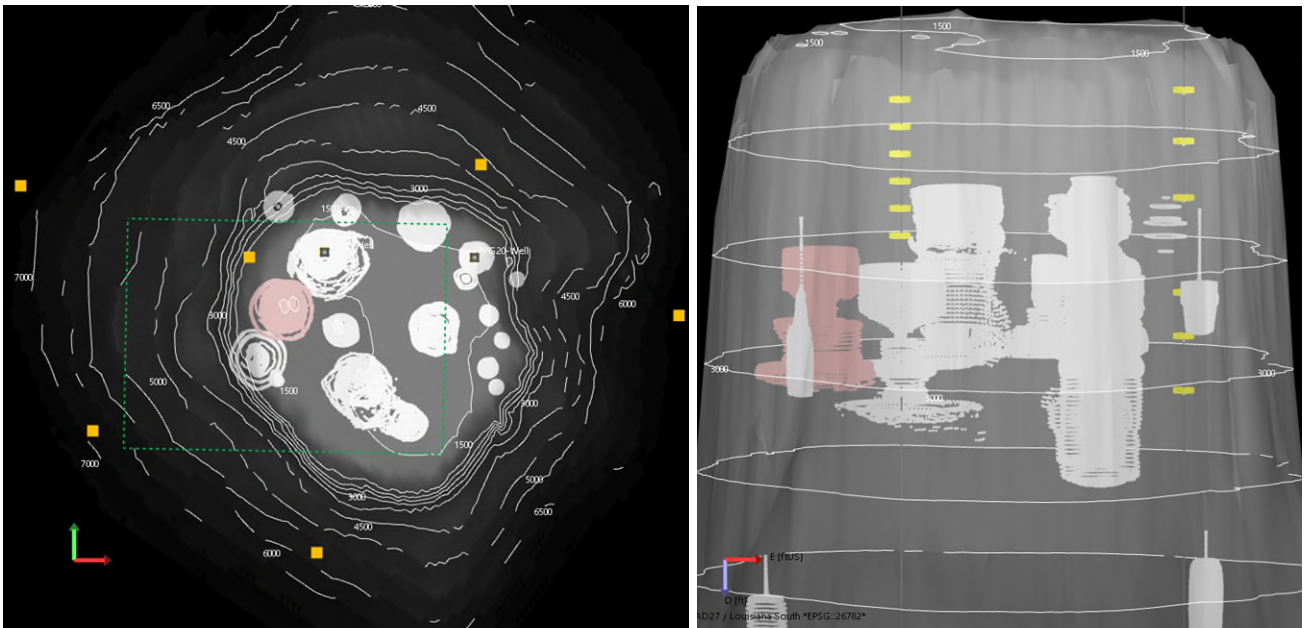


Figure 2: Map (left) and West-East cross section (looking from the South) of the Sulphur Mines Salt Dome. The salt boundary is indicated by gray contour lines. The wellbores with the borehole array sensors are marked by yellow dots for PPG No. 006X and PPG No. 020. Cavern 7 is represented with a red sonar survey. The proposed AOI is indicated on the map view by the green square. The surface network is indicated by the orange squares.

Microseismic activity during reporting period

- in January 2026, 133 seismic events have been detected by the borehole arrays, **71** events had waveform with sufficient signal to noise ratio to compute their location and magnitude. Amongst the 71 located events:
 - 36 are located inside the AOI (Area of Interest) and distributed as follows (Figure 4):
 - 4 events associated with the cavern PPG-06.
 - 8 events associated with the cavern PPG-07.
 - 8 events associated with the cavern LGS-02.
 - 3 events associated with the cavern PPG-16.
 - 2 events associated with the cavern PPG-04.
 - 1 event associated with the cavern LGS-01.
 - 5 events in the cap-rock.
 - 5 events located on the flank.
 - 35 events are located outside the AOI and distributed as follows:
 - 1 event associated with the cavern LGS-02.
 - 12 events associated with the cavern PPG-16.
 - 2 events on the cap-rock.
 - 20 events on the flank of the salt dome.
- The maximum magnitude during this period was -0.4, that occurred on:
 - 2026/01/13 10:02:05 (CST), on the cavern AOI-PPG-16.
 - 2026/01/08 13:38:12 (CST), on the salt flank.
- No rockfall event has been detected in January 2026.

The catalog of the located events is presented in Appendix 3.

I. Distribution of the microseismic event

The histogram below shows the number of the locatable and non-locatable events during January 2026.

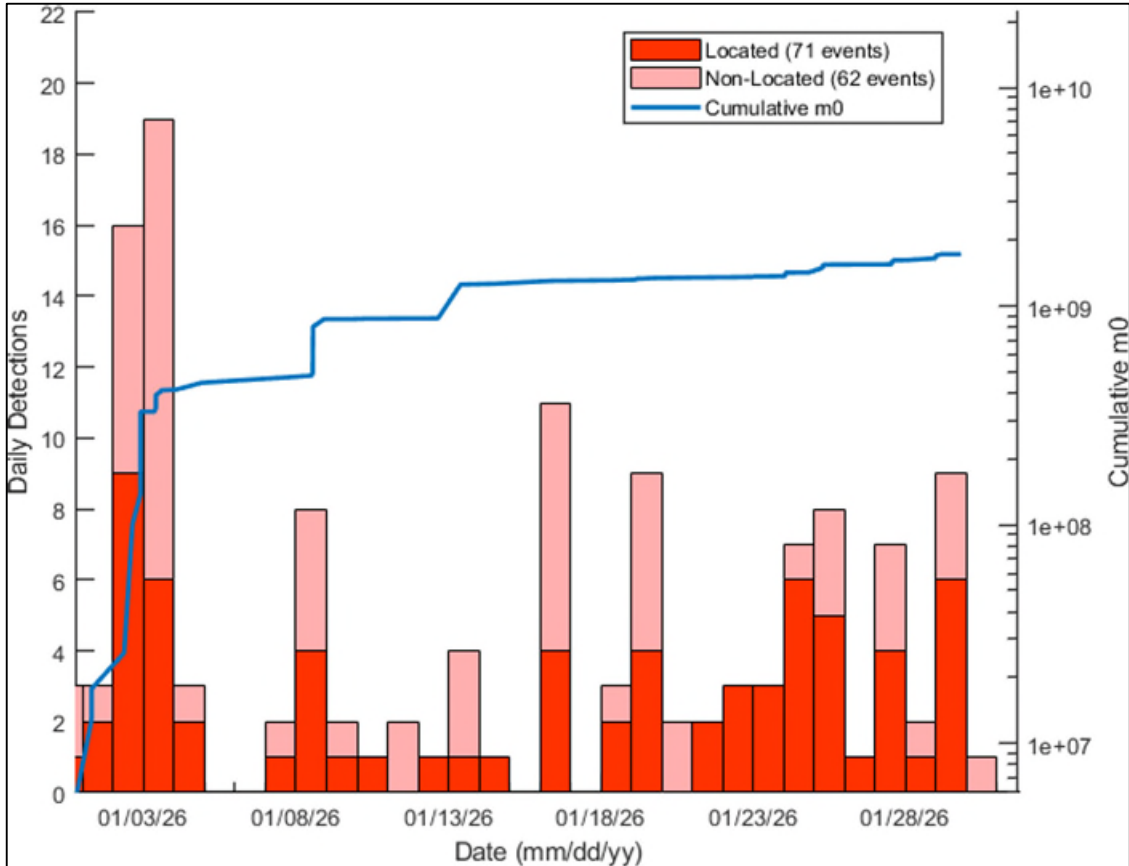


Figure 3: Daily distribution of all events during January 2026. Dark color represents the located events while light one shows the not located events. Blue line represents the cumulative seismic moment M_0 for the located events.

Figure 4 shows the distribution of the events by area. In January 2026, the seismicity occurred mainly in the caverns PPG-16 (12 events), **PPG-07 (8 events)** & LGS-02 (8 events) and on the flank (20 events). According with Figure 5, which shows the cumulated seismic energy with respect to the areas, the main release of seismic energy occurred on PPG-16 and on the flank (both with the $M_w = -0.4$ events).

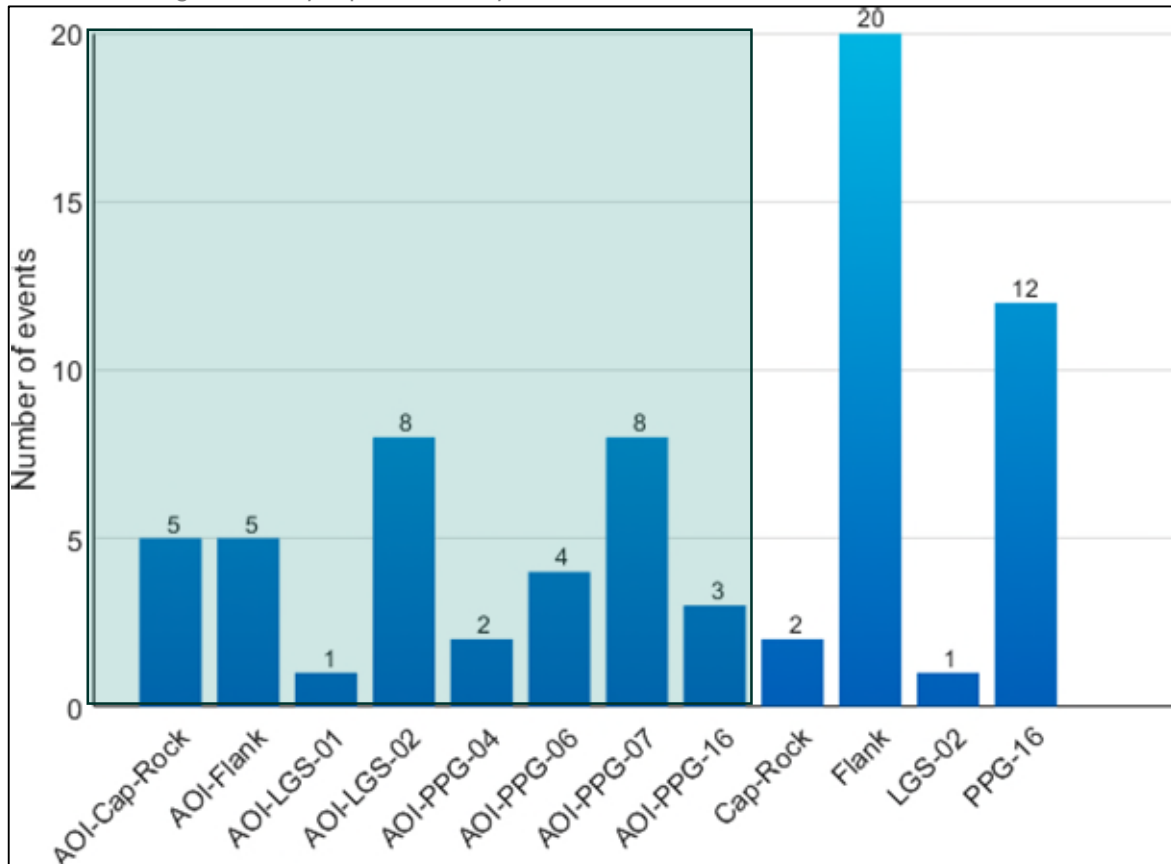


Figure 4: Events distribution by associated cavern. The green rectangle indicates the events in the AOI.

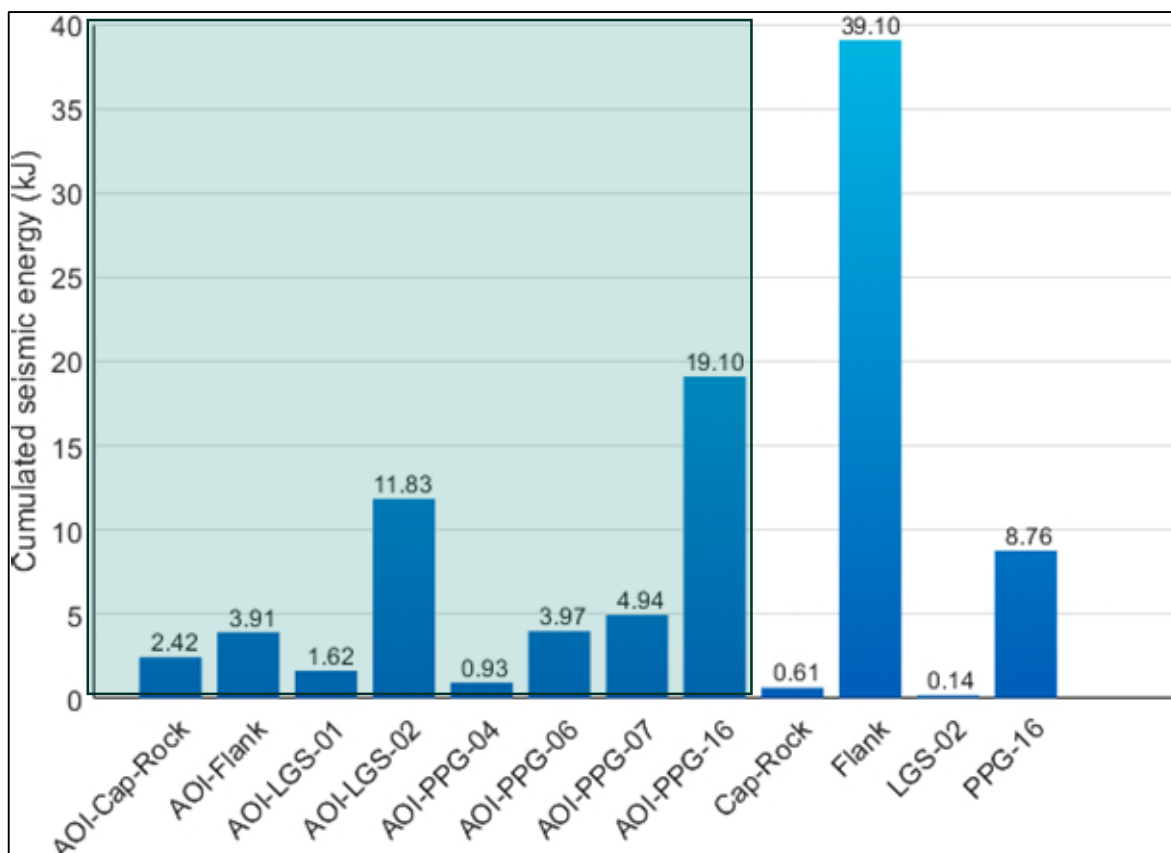


Figure 5: Events energy distribution by cavern. The green rectangle indicates the events in the AOI.

Event Location

The location maps are presented in the report as:

- All events location: inside and outside the AOI (Figure 6 and Figure 7).
- Events located in the AOI (Figure 8, Figure 9, Figure 10).

I. All event locations (inside and outside AOI)

The figures below show the events location using the borehole arrays.

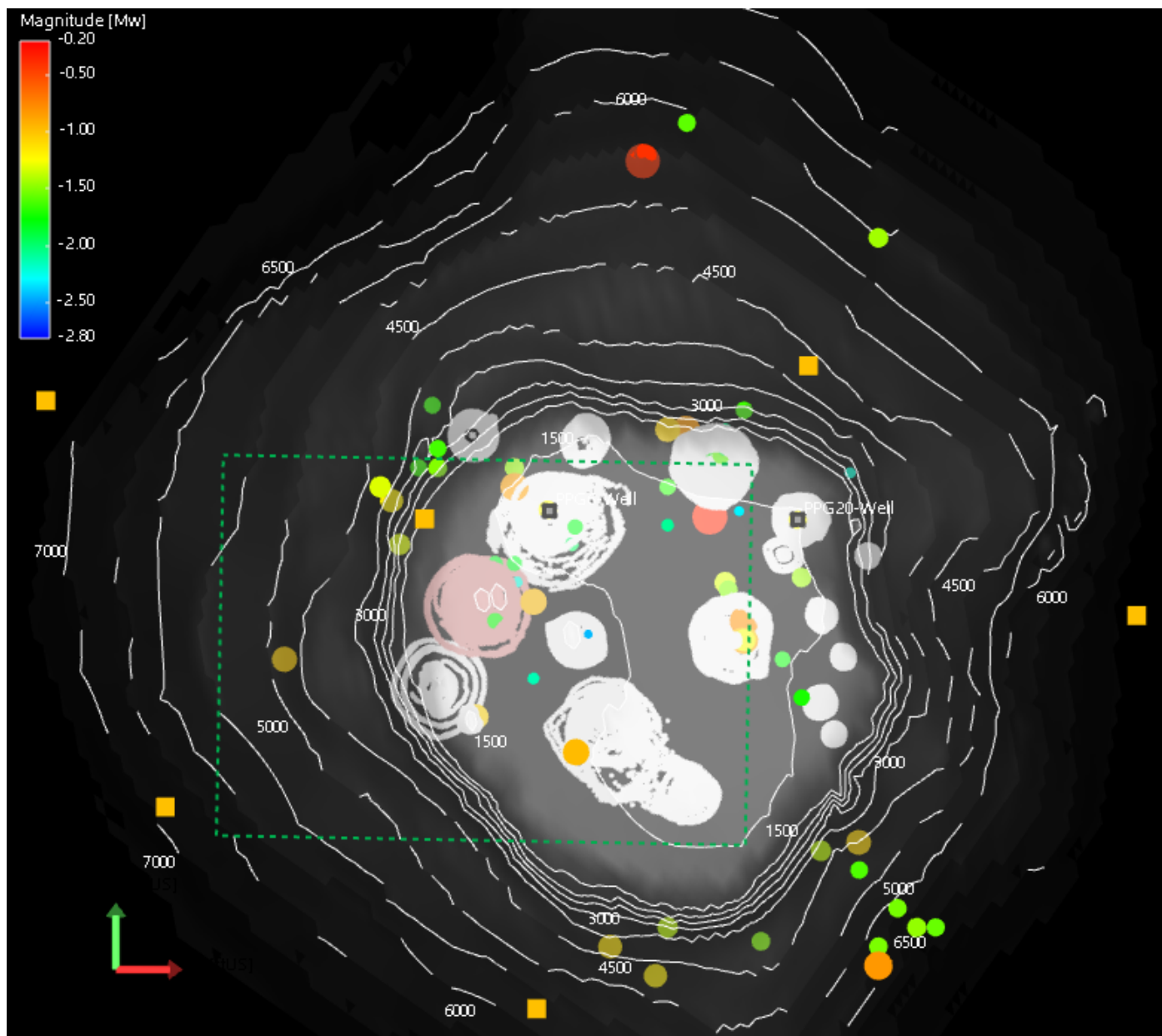


Figure 6: Map of the located events in January 2026. The events are colored, from blue to red, and sized by magnitude; the green rectangle represents the AOI, the orange squares represent the surface stations.

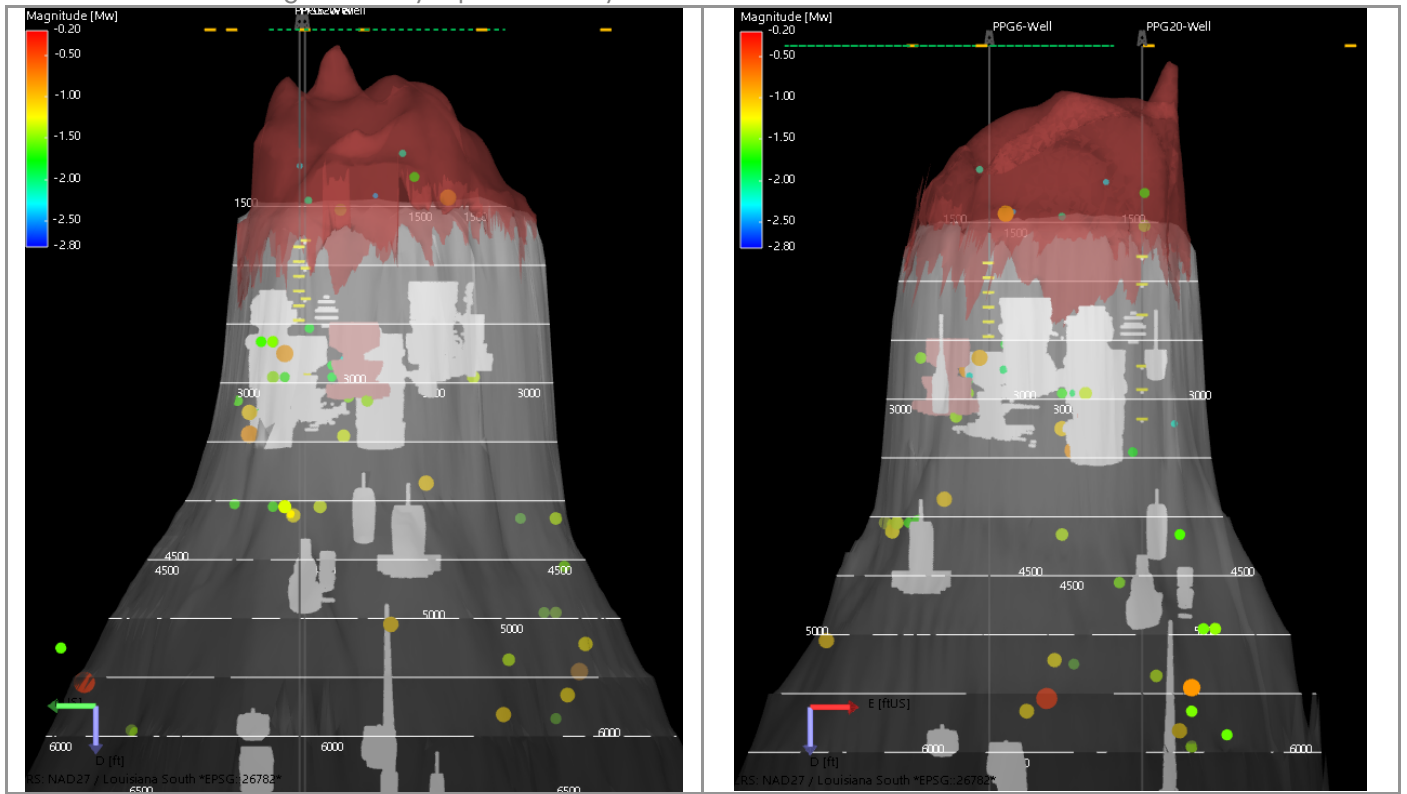


Figure 7: Cross sections W-E (right) looking from the South, and N-S (left), looking from the West. The events are colored, from blue to red, and sized by magnitude.

II. Event Locations in AOI

The figures below show the location of the events inside the AOI.

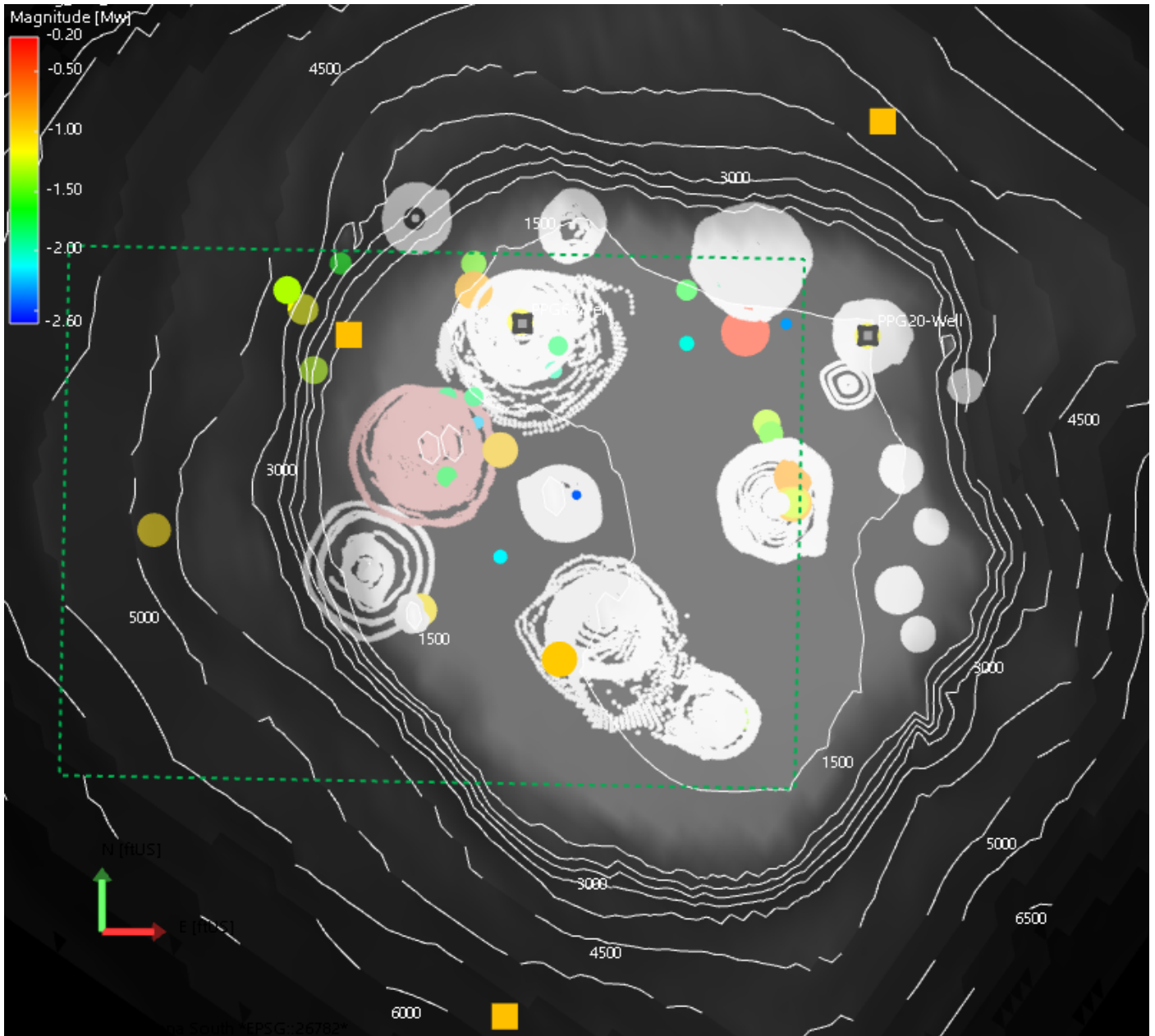


Figure 8: Map of the located events inside the AOI in January 2026. The events are colored, from blue to red, and sized by magnitude; the green rectangle represents the AOI, the orange squares represent the surface stations.

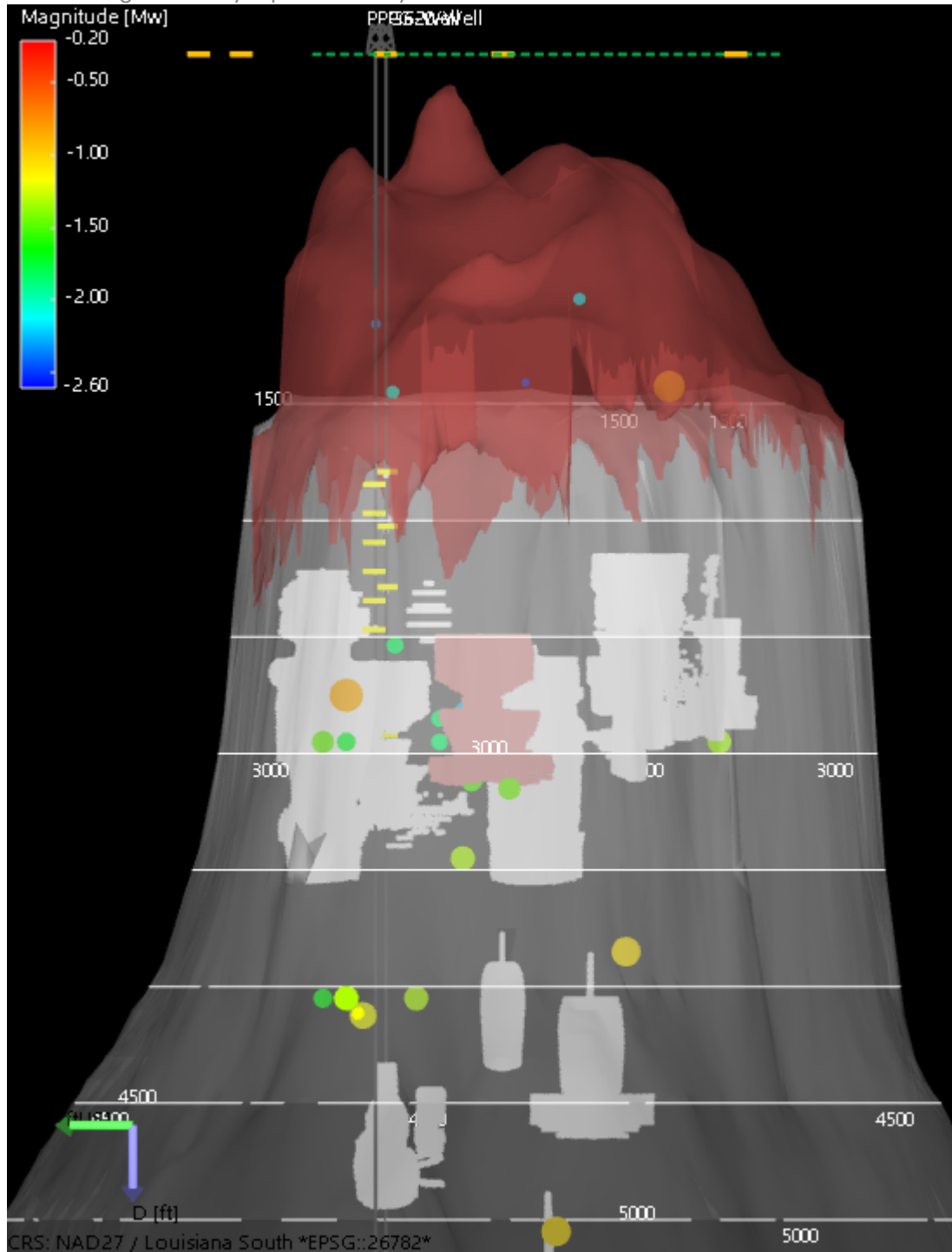


Figure 9: Cross sections N-S (looking from West) of the located events. The events are colored, from blue to red, and sized by magnitude.

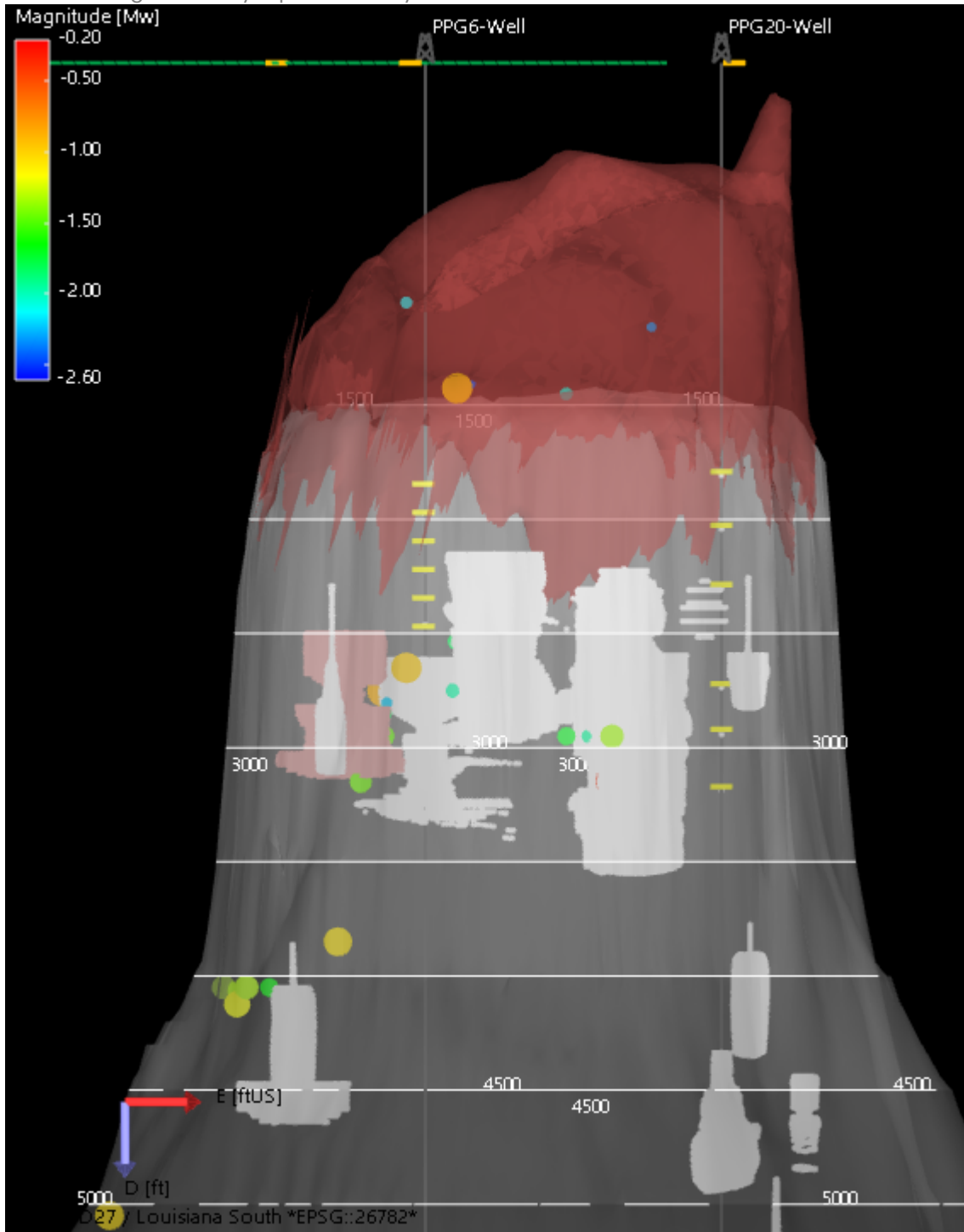


Figure 10: Cross sections W-E (looking from south) of the located events. The events are colored, from blue to red, and sized by magnitude.

Magnitude and depth distribution

The figure below shows the distribution of the moment magnitudes in January 2026. The values vary between -2.7 and -0.4, median value is -1.49.

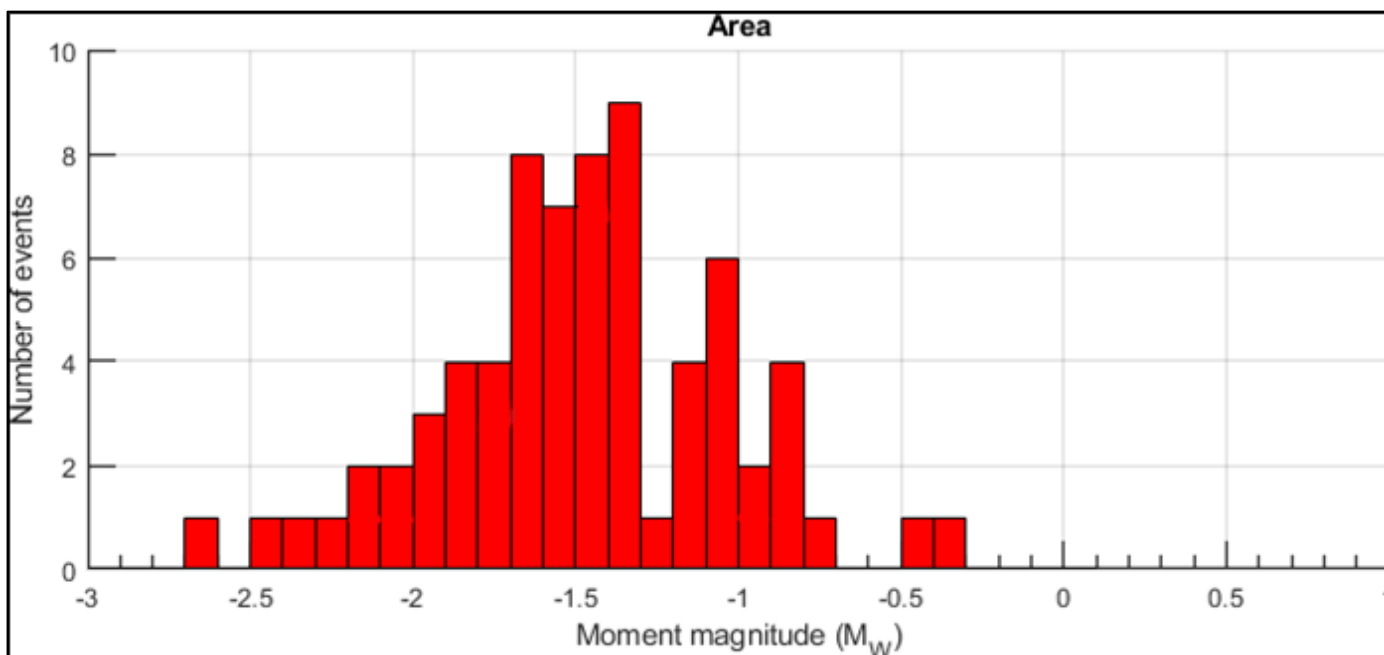


Figure 11: Distribution of magnitudes (M_w) for located events in January 2026.

The figure below shows the depth distribution in January 2026 for all the located events.

Events are located between 1,050 ft and 5,950 ft. It is possible to distinguish 3 main groups:

- The first one between 1,050 ft and 1,529 ft – above the caverns depth and associated with events located in the Cap-Rock,
- A second one between 2,535 ft and 3,850 ft – associated with events located at depth of the caverns (3 events on the flank),
- A third between 4,028 ft and 5,950 ft – associated with events located at the flank depth.

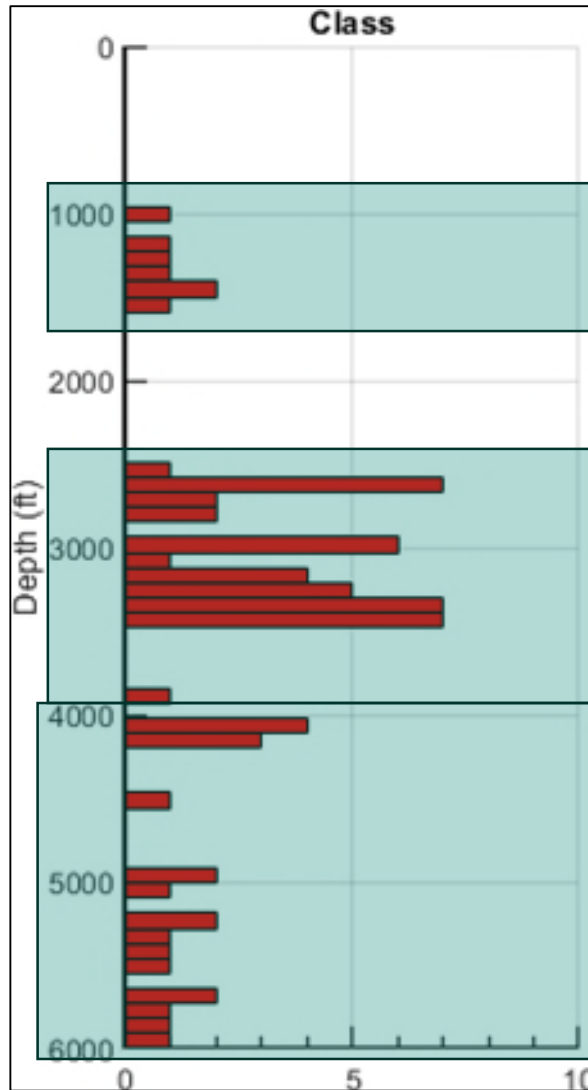


Figure 12: Distribution of the depths for all the events located events in January 2026.

Microseismic history from the beginning of the acquisition

I. History of detections.

In January 2026, the total number of detections (located and not-located events) increased slightly with respect to the previous month (133 detected events in January 2026 compared with 123 detected events in December 2025).

The number of located events is also higher in January 2026 (71 located events) with respect to December 2025 (44 located events).

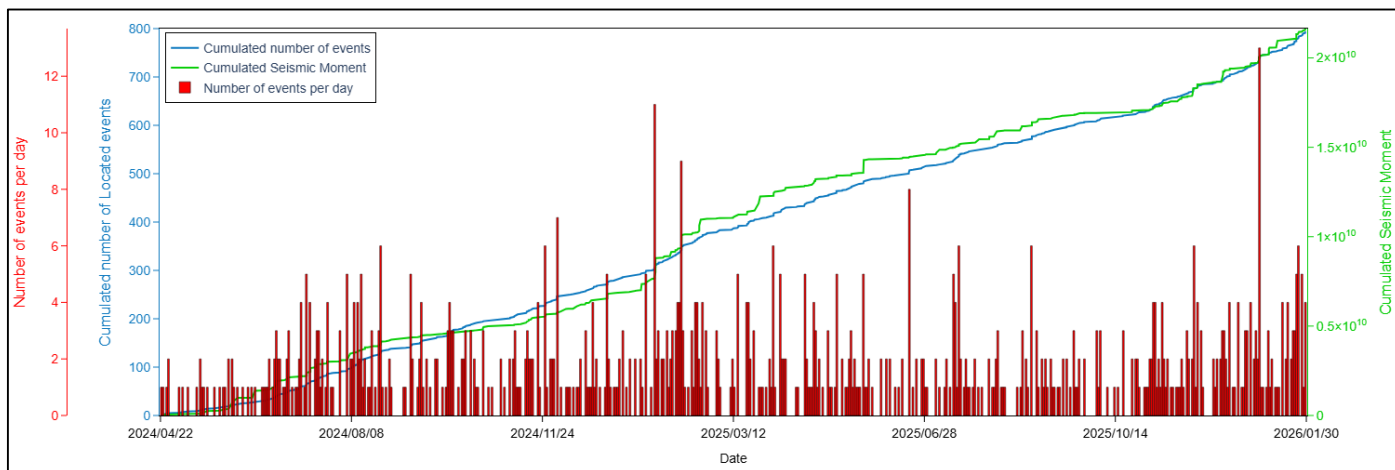


Figure 13: Distribution of the located microseismic events since the beginning of the acquisition on 04/21/2024. Blue line represents the cumulated number of located events. Green line represents the cumulated seismic moment Mo.

II. Historical magnitude distribution.

Figure 14 shows the moment magnitude distribution since the beginning of the acquisition. Dark color bars present the current monthly period while the light red color bars present the distribution since the beginning of the acquisition (April 21, 2024).

Since the beginning of the acquisition events magnitude are between -2.7 and -0.2 (for 796 located events). The median value of the magnitude since the beginning of the acquisition is -1.47.

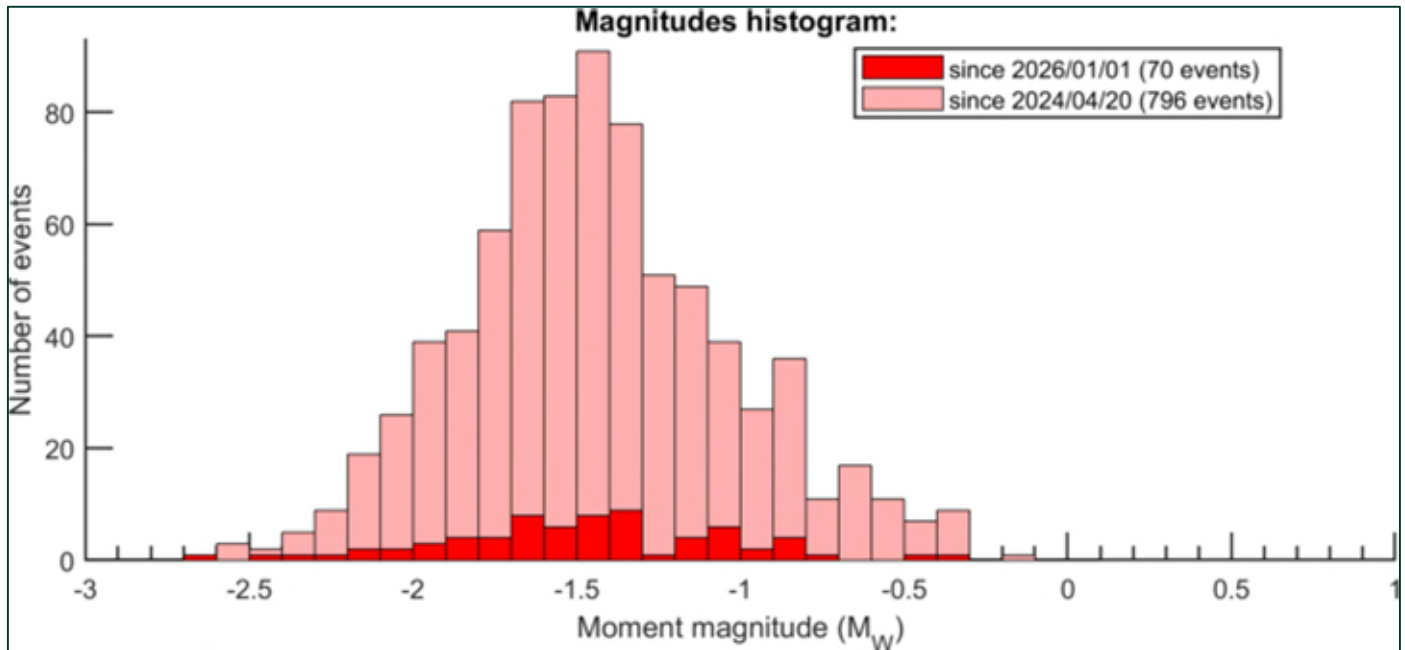


Figure 14: Distribution of magnitude (M_w) for located events. Dark color bars present the current monthly period (January 2026) and light color bars present the distribution since the beginning of the acquisition (from April 21, 2024).

III. History of the event locations.

History in Cap-Rock and on the Flank

The figure below shows the top map and side view of all the events located in the cap-rock and in the salt flank since April 21, 2024.

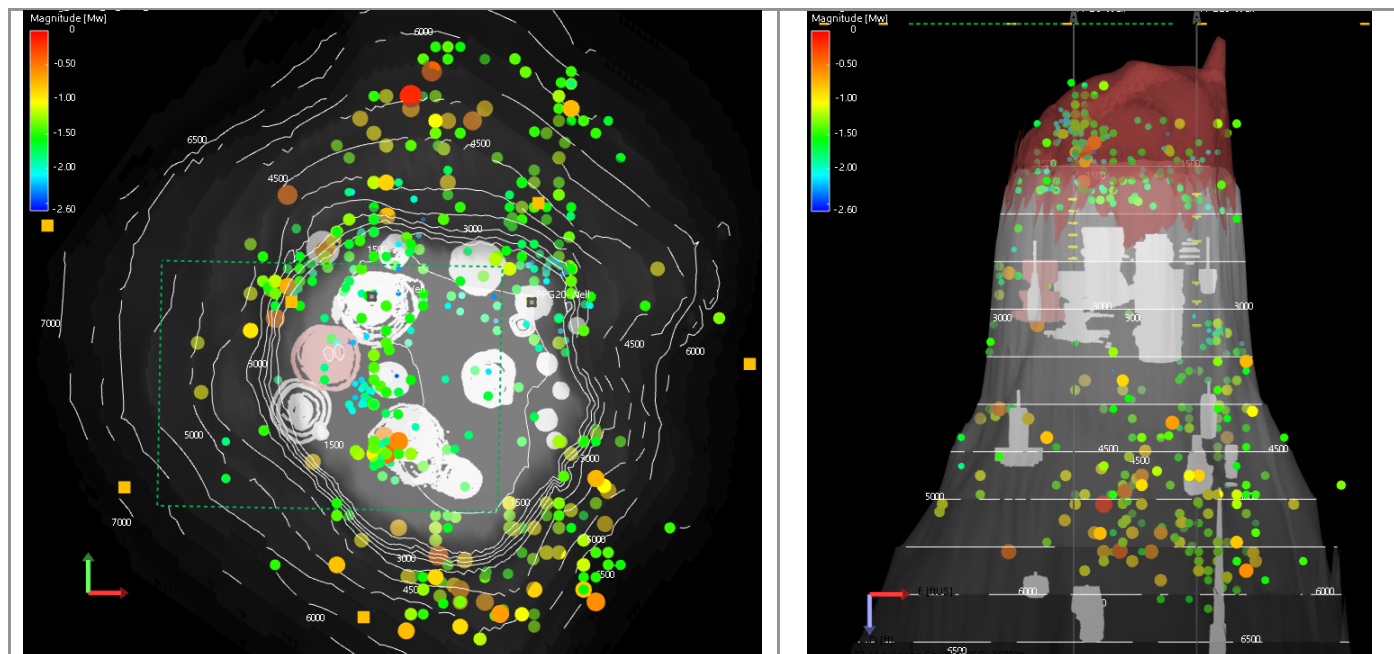


Figure 15: Map view (left) and W-E side view (right) of the cumulative seismicity recorded since the beginning of the acquisition, located in the Cap Rock (red formation) and on the Flank. Green rectangle represents the AOI area. The events are colored, from blue to red, and sized by magnitude.

History around the caverns

The figures below show the history of the events associated with the caverns since the beginning of the acquisition (April 21, 2024).

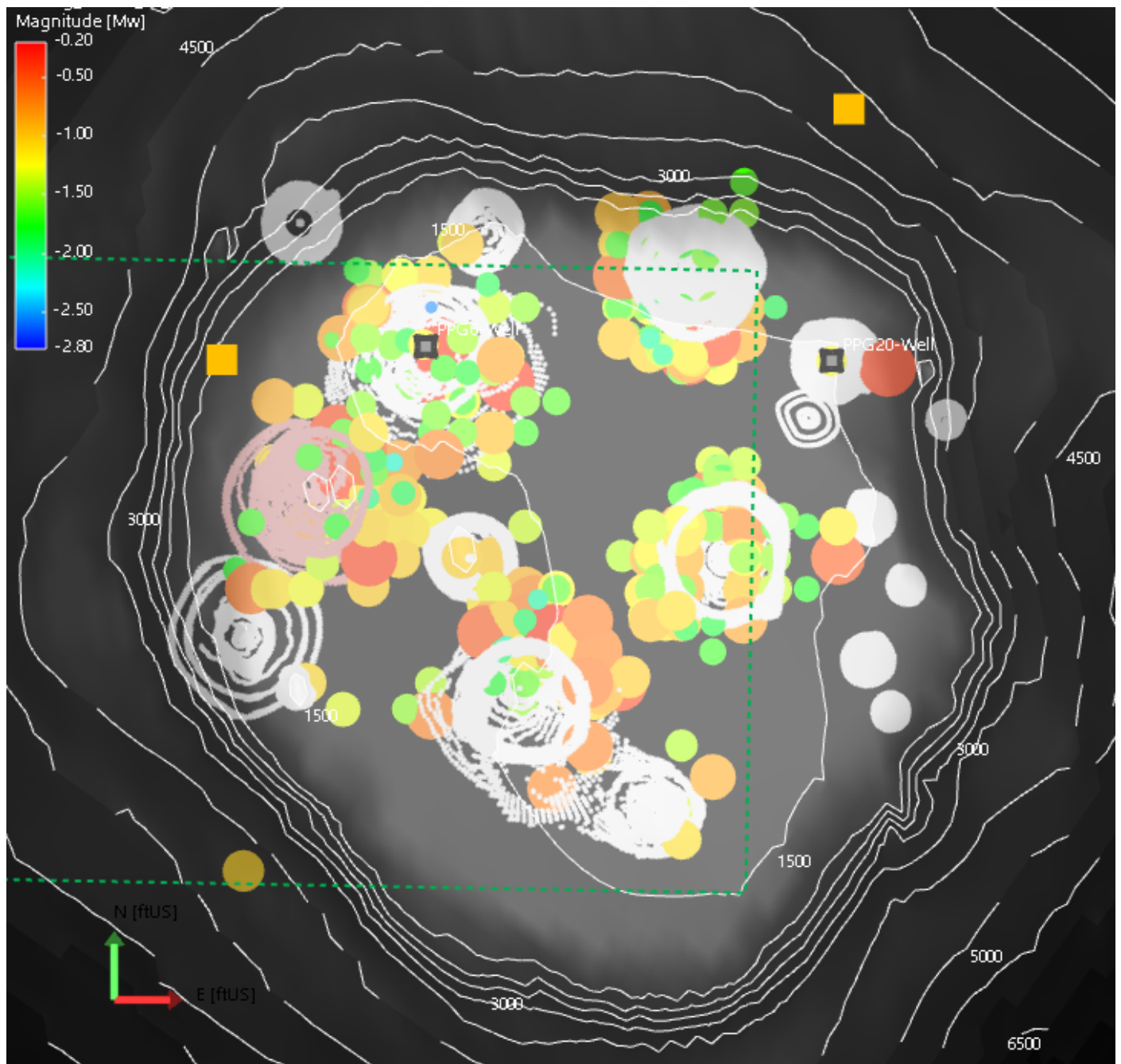


Figure 16: Map view of the events located in proximity to the caverns since the beginning of the acquisition (April 21, 2024). The events are colored, from blue to red, and sized by magnitude.

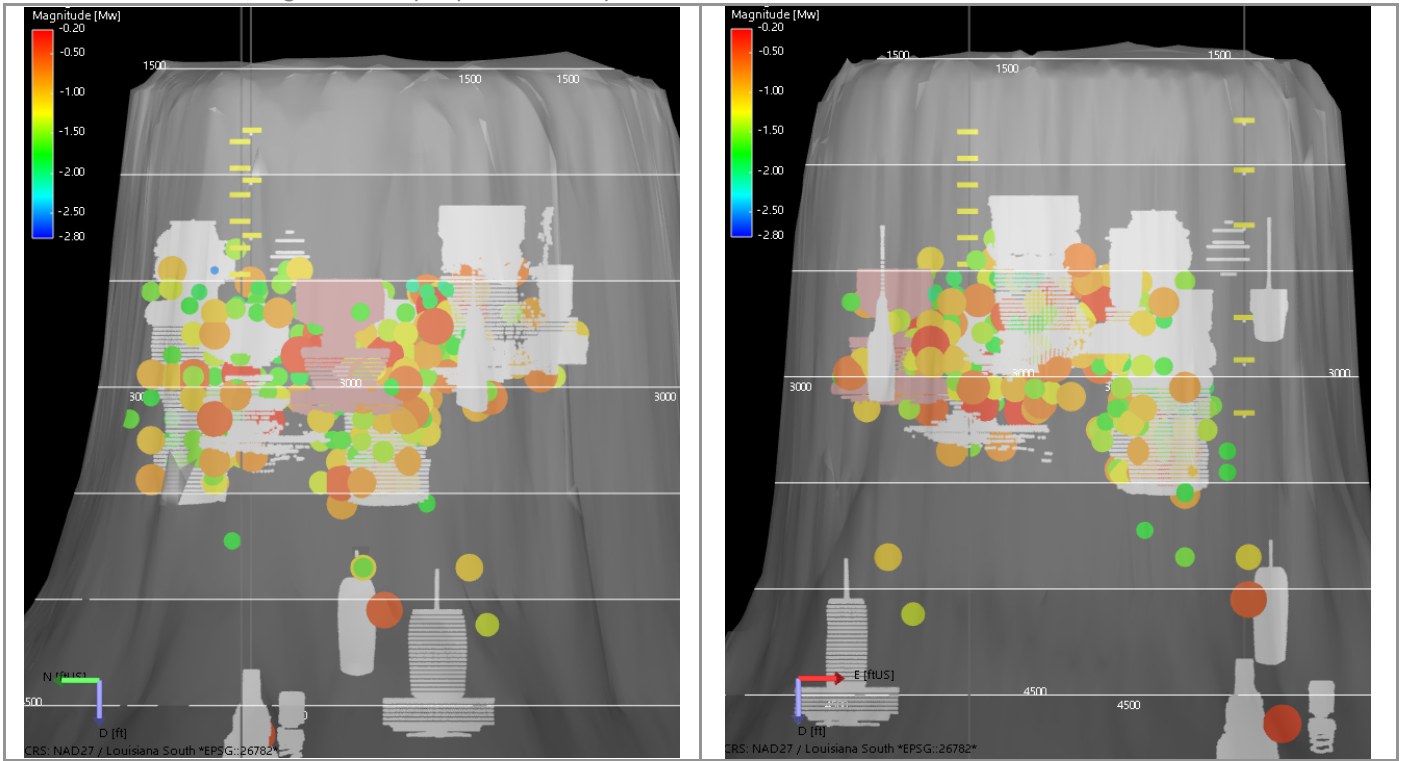


Figure 17: Cross sections W-E (right), looking from the South; and N-S (left), looking from the West of the events located close to the caverns since the beginning of the acquisition. The events are colored, from blue to red, and sized by magnitude.

APPENDIX 1 – Alert level criteria

Proposed Microseismic Alert Level Criteria and Response for Sulphur Mines Dome.

Alert Status	Criteria	Response
Low (GREEN)	No events with magnitude ≥ 0.5 in AOI and/or Less than 30 MEQ per day in AOI with magnitudes ≥ -1	Once per week data processing, with previous monthly microseismic activity summary in the AOI is provided by the 15th of the following month to LDNR IMD.
Advisory (YELLOW)	Event with magnitude ≥ 0.5 and < 1.0 in AOI and/or Count of MEQ per day ≥ 30 and < 40 in AOI with magnitudes ≥ -1	Daily data processing M-F. Weekly reporting is provided LDNR IMD with activity summary from the previous week. Status remains active until seismic levels within the AOI reach "low"(green) level for 1 day.
Watch (ORANGE)	Event with magnitude ≥ 1 and < 1.5 in AOI and/or Count of MEQ ≥ 40 and < 50 with magnitudes ≥ -1 in AOI	Seven days per week data processing, 2x week reporting with activity for the previous days is provided via email and text message notifications to IMD. Status remains active until seismic levels within the AOI reach Advisory or Low criteria for 2 consecutive days.
Warning (RED)	Event with magnitude ≥ 1.5 in the AOI and/or Count of MEQ ≥ 50 with magnitudes ≥ -1 in the AOI	Seven days per week data processing, daily reporting with online meetings with stake holders as needed. The warning status level remains active until seismicity levels within the AOI reach a lower status level for 2 consecutive days.

APPENDIX 2 – Network Coordinates

Borehole arrays coordinates:

Wellbore	Sensor	TVD SS	Easting (ft)	Northing (ft)
PPG 6x	Tool 1	1844	1343141	583425
PPG 6x	Tool 2	1969	1343141	583425
PPG 6x	Tool 3	2094	1343141	583425
PPG 6x	Tool 4	2219	1343141	583425
PPG 6x	Tool 5	2344	1343141	583425
PPG 6x	Tool 6	2469	1343141	583425
PPG 20	Tool 1	1790	1344445	583372
PPG 20	Tool 2	2025	1344445	583372
PPG 20	Tool 3	2285	1344445	583372
PPG 20	Tool 4	2720	1344445	583372
PPG 20	Tool 5	2920	1344445	583372
PPG 20	Tool 6	3170	1344445	583372

Station	LAT WGS84	LON WGS84	Date start	Date end
Temp_1a	30.2575	-93.4123	1/30/2023	2/9/2023
Temp_1b	30.2534	-93.4135	2/9/2023	4/3/2023
Temp_2a	30.2570	-93.4097	1/30/2023	2/9/2023
Temp_2b	30.2555	-93.4132	2/9/2023	2/27/2023
Temp_2c	30.2547	-93.4138	2/27/2023	4/5/2023
Temp_3a	30.2533	-93.4091	1/30/2023	2/9/2023
Temp_3b	30.2563	-93.4146	2/9/2023	4/5/2023
Temp_4a	30.2486	-93.4123	1/30/2023	2/27/2023
Temp_4b	30.2507	-93.4121	2/27/2023	3/8/2023
Temp_4c	30.2506	-93.4100	3/8/2023	3/15/2023
Temp_4d	30.2503	-93.4119	3/15/2023	est 4/3/2023
Temp_5a	30.2502	-93.4156	1/30/2023	2/27/2023
Temp_5b	30.2507	-93.4153	2/27/2023	3/15/2023
Temp_5c	30.2504	-93.4140	3/15/2023	est 4/3/2023
Temp_6a	30.2532	-93.4166	1/30/2023	3/15/2023
Temp_6b	30.2529	-93.4161	3/15/2023	4/4/2023
Temp_7a	30.2547	-93.4161	1/30/2023	4/3/2023
Semi Perm S01	30.2453	-93.4073	4/4/2023	
Semi Perm S02	30.2571	-93.4098	4/6/2023	
Semi Perm S03	30.2536	-93.4091	4/6/2023	
Semi Perm S04	30.2470	-93.4213	4/5/2023	5/12/2023
Semi Perm S04_1	30.2506	-93.4204	5/12/2023	
Semi Perm S05	30.2564	-93.4224	4/5/2023	
Semi Perm S06	30.2532	-93.4167	4/5/2023	
Semi Perm S07	30.2547	-93.4162	4/5/2023	
SUL01 trillium	30.2452	-93.4071	9/20/2023	3/12/2024
	LAT NAD 83	LON NAD 83		
SUL02 trillium	30.2570	-93.4098	9/13/2023	
SUL03 trillium	30.2505	-93.4203	9/12/2023	
SUL04 trillium	30.2563	-93.4224	9/12/2023	
SUL05 trillium	30.2547	-93.4161	9/13/2023	
SUL06 trillium	30.2535	-93.4043	3/12/2024	
SUL07 trillium	30.2477	-93.4141	3/12/2024	

Seismic Station locations and operational dates at Sulphur Mines Dome (to November 1, 2024).

Temporary Station locations and start and end dates provided by Westlake.

Trillium Station locations provided by Nanometrics and Westlake (Trillium SUL 02-07).

APPENDIX 3 – Catalogue of located events

#	Event origin time CST (UTC-6)	Easting (ft)	Northing (ft)	Depth (ft)	Δ Easting (ft)	Δ Northing (ft)	Δ Depth (ft)	Mw	Area
1	12/31/2025 19:22:48.407	1345166	581244	5850	1251	3213	2721	-1.55	Flank
2	01/01/2026 06:53:28.160	1344866	581144	5650	993	3213	1828	-1.51	Flank
3	01/01/2026 06:59:23.693	1344766	581544	4150	652	2555	1296	-1.60	Flank
4	01/02/2026 08:35:44.337	1345066	581244	4950	1124	2947	2426	-1.46	Flank
5	01/02/2026 15:11:29.905	1344866	581044	5450	1149	3376	2419	-0.82	Flank
6	01/02/2026 21:31:09.025	1344164	582754	3324	514	1152	961	-1.01	AOI-LGS-02
7	01/02/2026 21:31:14.457	1344166	582744	3250	492	1108	922	-1.25	AOI-LGS-02
8	01/02/2026 21:31:31.482	1344166	582844	3350	492	1126	908	-0.79	AOI-LGS-02
9	01/02/2026 21:31:48.152	1344166	582744	3350	502	1175	930	-1.43	AOI-LGS-02
10	01/02/2026 21:31:55.174	1344066	583044	3450	518	1093	924	-1.31	AOI-LGS-02
11	01/02/2026 21:32:07.863	1344181	582837	3336	484	1091	907	-1.39	AOI-LGS-02
12	01/02/2026 21:32:16.606	1344166	582744	3450	517	1239	953	-0.89	AOI-LGS-02
13	01/03/2026 08:23:36.824	1344719	583617	3209	366	622	523	-2.19	Flank
14	01/03/2026 09:39:08.963	1344566	581644	5350	945	2817	1706	-1.37	Flank
15	01/03/2026 09:39:25.031	1344253	581172	4558	999	2961	1853	-1.50	Flank
16	01/03/2026 09:42:39.895	1343288	582159	1425	414	1609	898	-0.96	AOI-Cap-Rock
17	01/03/2026 13:22:08.941	1343966	581944	2950	561	1873	1677	-1.34	AOI-PPG-04
18	01/03/2026 13:22:26.518	1343966	581944	2950	563	1877	1658	-1.54	AOI-PPG-04
19	01/04/2026 01:30:58.507	1342866	582844	2650	479	899	796	-1.75	AOI-PPG-07
20	01/04/2026 21:57:01.554	1344763	581688	5816	1006	2985	1566	-1.07	Flank
21	01/07/2026 17:43:03.663	1343466	581144	5650	1102	3595	1896	-1.12	Flank
22	01/08/2026 12:06:32.266	1342966	583644	2950	351	928	451	-1.45	AOI-PPG-06
23	01/08/2026 13:20:01.649	1344082	583006	3117	428	859	758	-1.49	AOI-LGS-02

#	Event origin time CST (UTC-6)	Easting (ft)	Northing (ft)	Depth (ft)	ΔEasting (ft)	ΔNorthing (ft)	ΔDepth (ft)	Mw	Area
24	01/08/2026 13:38:12.307	1343636	585245	5542	867	3182	1341	-0.40	Flank
25	01/08/2026 22:19:42.355	1342966	583544	2750	334	707	384	-0.85	AOI-PPG-06
26	01/09/2026 23:28:36.850	1343266	583244	2750	285	807	428	-1.95	AOI-PPG-06
27	01/10/2026 07:00:48.558	1344366	582644	3450	569	1235	790	-1.76	LGS-02
28	01/12/2026 16:22:52.522	1344466	582444	1250	382	1372	617	-1.71	Cap-Rock
29	01/13/2026 10:02:05.452	1343986	583387	3146	283	793	642	-0.35	AOI-PPG-16
30	01/14/2026 12:39:48.325	1344866	584844	5950	1033	3299	1747	-1.43	Flank
31	01/16/2026 03:05:25.527	1341766	582644	5050	940	2599	1513	-1.04	AOI-Flank
32	01/16/2026 07:04:55.222	1342980	583047	2803	418	920	553	-2.21	AOI-PPG-07
33	01/16/2026 07:05:14.348	1342966	583144	2850	423	919	566	-1.82	AOI-PPG-07
34	01/16/2026 08:44:53.860	1342866	583144	2950	371	1053	554	-1.83	AOI-PPG-07
35	01/18/2026 13:18:29.752	1342866	582844	3150	399	1314	599	-1.43	AOI-PPG-07
36	01/18/2026 16:38:19.347	1343283	583335	2535	275	693	420	-1.80	AOI-PPG-06
37	01/19/2026 04:30:09.698	1342566	583644	2650	350	780	591	-1.61	Flank
38	01/19/2026 04:30:24.272	1342566	583644	2650	358	815	626	-1.49	Flank
39	01/19/2026 04:31:07.700	1342566	583744	2650	348	783	663	-1.62	Flank
40	01/19/2026 17:54:41.208	1343766	581244	4150	1057	2730	2147	-1.37	Flank
41	01/21/2026 01:17:00.899	1344966	581344	4950	1083	2769	2335	-1.52	Flank
42	01/21/2026 05:27:16.785	1343066	582544	1050	414	1488	660	-2.13	AOI-Cap-Rock
43	01/22/2026 14:50:02.456	1344045	583711	3351	477	1017	853	-1.57	PPG-16
44	01/22/2026 14:50:15.434	1344081	583762	3325	483	1014	857	-2.69	PPG-16
45	01/22/2026 14:50:25.558	1344066	583844	3250	474	1007	850	-2.05	PPG-16
46	01/23/2026 01:28:33.012	1344066	583744	3250	431	937	707	-1.89	PPG-16
47	01/23/2026 01:28:43.329	1344166	583944	3150	303	1011	436	-1.63	PPG-16
48	01/23/2026 01:28:55.458	1344066	583744	3350	509	1037	910	-1.91	PPG-16

#	Event origin time CST (UTC-6)	Easting (ft)	Northing (ft)	Depth (ft)	ΔEasting (ft)	ΔNorthing (ft)	ΔDepth (ft)	Mw	Area
49	01/24/2026 02:16:24.398	1342466	583644	4050	516	1701	821	-1.65	AOI-Flank
50	01/24/2026 02:16:29.252	1342325	583472	4124	500	1635	855	-1.18	AOI-Flank
51	01/24/2026 02:16:36.049	1342266	583544	4050	511	1662	875	-1.31	AOI-Flank
52	01/24/2026 02:16:42.531	1342366	583244	4050	531	1760	806	-1.31	Flank
53	01/24/2026 02:16:48.647	1342538	583970	4028	543	1826	902	-1.66	AOI-Flank
54	01/24/2026 20:53:06.396	1343766	583344	1450	239	747	454	-2.07	AOI-Cap-Rock
55	01/25/2026 07:48:41.313	1343861	583842	3436	338	1130	489	-0.82	PPG-16
56	01/25/2026 07:48:44.936	1343866	583844	3450	339	1127	486	-1.31	PPG-16
57	01/25/2026 07:48:51.803	1343866	583844	3450	339	1127	486	-1.37	PPG-16
58	01/25/2026 07:48:56.506	1343866	583844	3450	332	1084	450	-1.19	PPG-16
59	01/25/2026 14:51:52.518	1343866	585444	5250	890	3450	1630	-1.57	Flank
60	01/26/2026 21:26:20.455	1344139	583417	1157	373	938	943	-2.30	AOI-Cap-Rock
61	01/27/2026 14:15:58.745	1343966	583744	3250	462	906	763	-1.77	PPG-16
62	01/27/2026 14:16:07.535	1343766	583844	3250	619	1152	1163	-1.06	PPG-16
63	01/27/2026 14:16:29.976	1343766	583544	2950	355	791	682	-1.69	AOI-PPG-16
64	01/27/2026 15:58:43.738	1342766	582344	3850	946	2178	1779	-1.06	AOI-LGS-01
65	01/28/2026 01:19:05.487	1343866	583544	2950	329	751	645	-1.93	AOI-PPG-16
66	01/29/2026 00:49:46.342	1343066	582944	2650	354	930	519	-1.07	AOI-PPG-07
67	01/29/2026 00:50:33.051	1343066	582944	2650	354	912	508	-0.96	AOI-PPG-07
68	01/29/2026 00:50:52.586	1343066	582944	2650	360	934	519	-1.64	AOI-PPG-07
69	01/29/2026 05:19:30.425	1343702	580992	5216	1235	3458	2608	-1.17	Flank
70	01/29/2026 19:17:08.305	1343352	582775	1409	303	1139	576	-2.42	AOI-Cap-Rock
71	01/29/2026 20:53:01.916	1344465	583071	1529	294	758	484	-1.44	Cap-Rock