



Julie Shemeta  
12.21.2023

# Surface Seismic Monitoring Report Sulphur Mines Salt Dome Broadband Seismic Array Event Location and Magnitude

Report Date: Dec. 21, 2023  
Author: Julie Shemeta, MEQ Geo  
Using results from Nanometrics

## Summary Event Location and Magnitude

- Time: December 20, 2023 @7:04:29 PM central
- Location (ft) X 1,343,300.63 Y 582,051.49 Z 558 ft msl (NAD27 LA South St PI)
- Magnitude -0.73

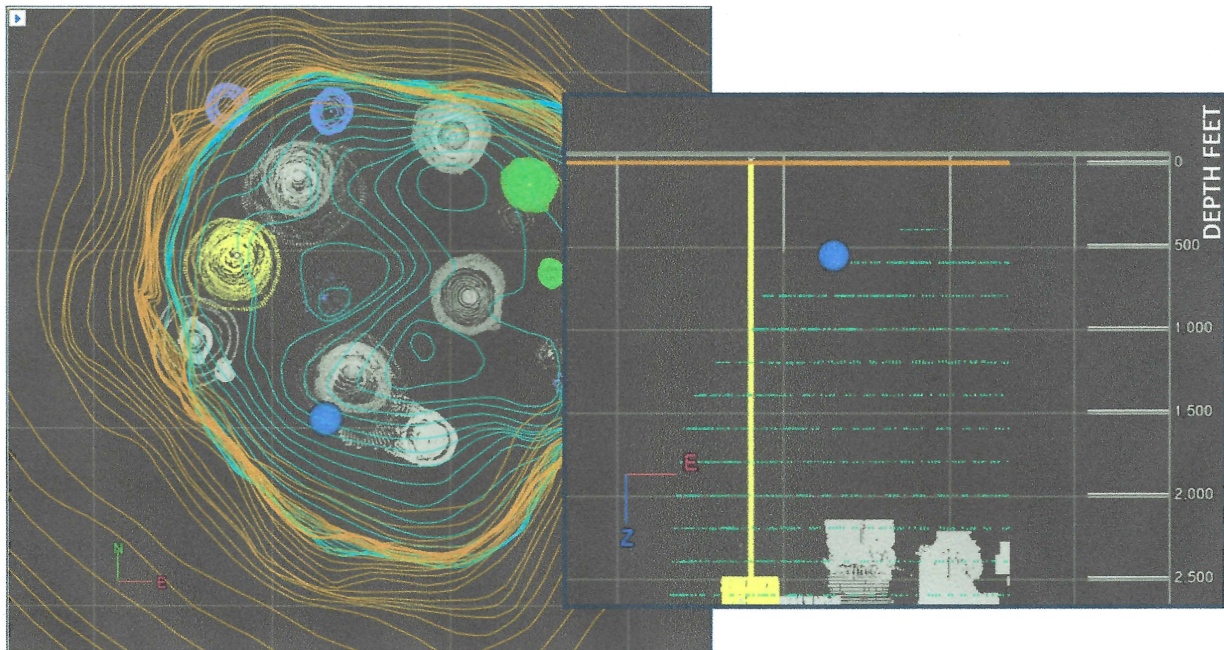


Figure 1. Left is a map of Sulphur Mines salt dome with cavern outlines. Lines show contours of salt (orange) and cap rock (cyan). The December 20 event location is show by blue dot. Right figure is West-East cross section, looking from south. Event location is shown by blue dot. Cap rock contours are shown by cyan dots. Depth scale is in feet, as labeled.