

**TRACT 45640 - Caddo Parish, Louisiana**

The mineral rights only on and under all lands now or formerly constituting the beds and bottoms of all water bodies of every nature and description, and under all other lands owned by and not presently under mineral lease as of April 12, 2023, from the State of Louisiana situated in Caddo Parish, Louisiana, and being more fully described as follows: All of the certain tracts or parcels of land acquired by the State of Louisiana, situated in Section 7, Township 17 North, Range 14 West, Caddo Parish, Louisiana, being the same property described in that certain Sale, recorded April 29, 1952 in Book 667, Page 565, in the Conveyance Records of the Clerk of Courts Office, Caddo Parish, Louisiana, and more particularly described as follows:

Lot 4 of Hester's Subdivision of Caddo Parish, Louisiana as per plat recorded in Book 38, Page 51, of the Conveyance Records of the Clerk of Courts office, Caddo Parish, Louisiana.

Lots twenty to thirty seven (20-37) of Wilbur Subdivision of Caddo Parish as per plat recorded in Book 100, Page 293 of the Conveyance Records of the Clerk of Courts office, Caddo Parish, Louisiana.

Subject to dedication for public highway off the south side of said Lot 4 and of lots 35, 36 & 37 of said Wilbur Subdivision as per act recorded in Book 289, Page 579 of the Conveyance Records of the Clerk of Courts Office, Caddo Parish, Louisiana

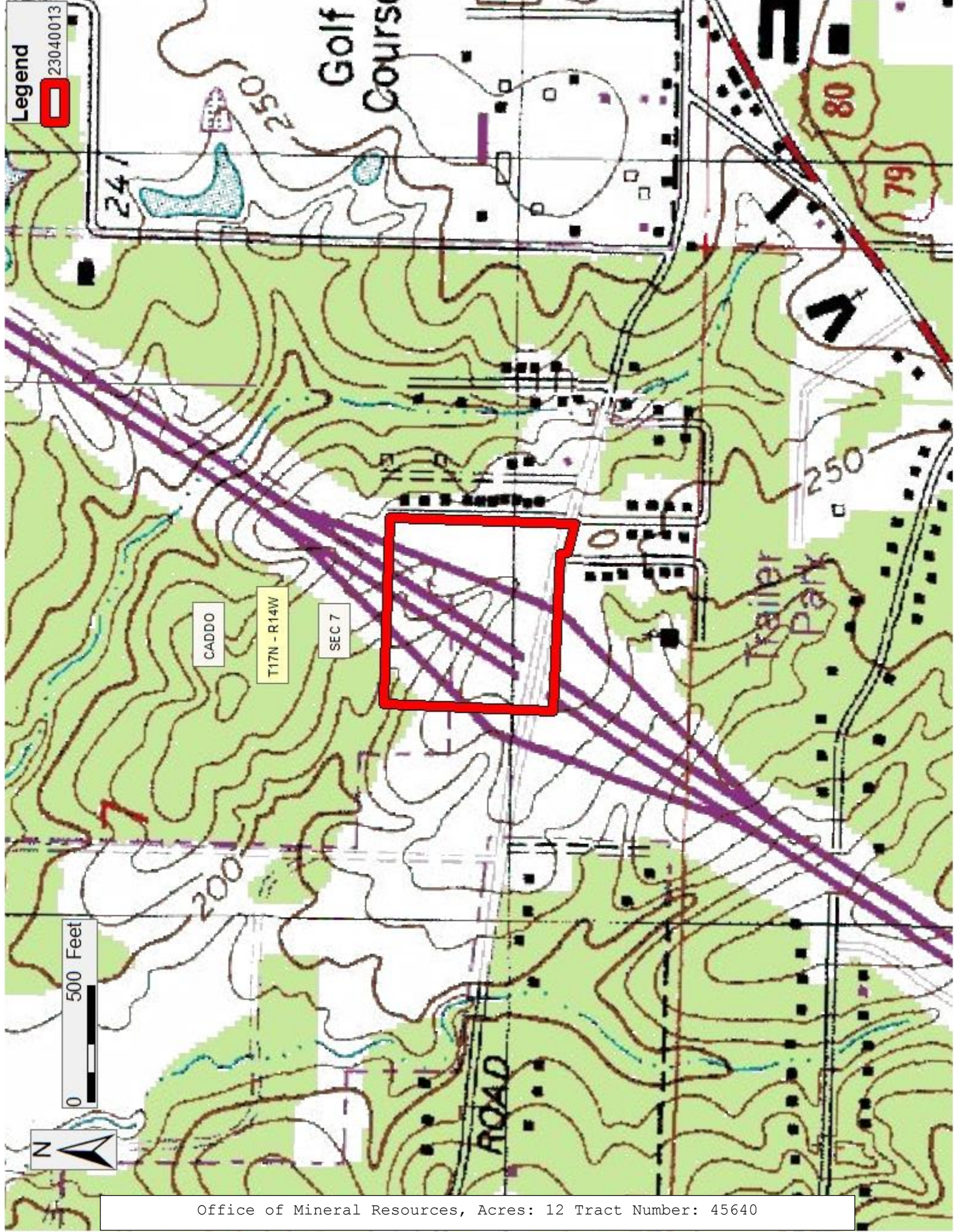
The aggregate of the above described tracts is **12 acres**, more or less, all as more particularly outlined on a plat on file in the Office of Mineral Resources, Department of Natural Resources. All bearings, distances and coordinates are based on Louisiana Coordinate System of 1927, (North or South Zone), where applicable.

NOTE: The above description of the Tract nominated for lease has been provided and corrected, where required, exclusively by the nomination party. Any mineral lease selected from this Tract and awarded by the Louisiana State Mineral and Energy Board shall be without warranty of any kind, either express, implied, or statutory, including, but not limited to, the implied warranties of merchantability and fitness for a particular purpose. Should the mineral lease awarded by the Louisiana State Mineral and Energy Board be subsequently modified, cancelled or abrogated due to the existence of conflicting leases, operating agreements, private claims or other future obligations or conditions which may affect all or any portion of the leased Tract, it shall not relieve the Lessee of the obligation to pay any bonus due thereon to the Louisiana State Mineral and Energy Board, nor shall the Louisiana State Mineral and Energy Board be obligated to refund any consideration paid by the Lessor prior to such modification, cancellation, or abrogation, including, but not limited to, bonuses, rentals and royalties.

Applicant: CYPRESS ENERGY PARTNERS, LLC

Bidder	Cash Payment	Price/ Acre	Rental	Oil	Gas	Other







#### **TRACT 45641 - Red River Parish, Louisiana**

All of the lands now or formerly constituting the beds and bottoms of all water bodies of every nature and description as to which title is vested in the State of Louisiana, together with all islands arising therein and other lands formed by accretion or by reliction, where allowed by law, excepting tax adjudicated lands, and not presently under mineral lease on April 12, 2023, situated in Red River Parish, Louisiana, and more particularly described as follows: Beginning at a point having Coordinates of X = 1,765,498.47 and Y = 465,096.82; thence South 01 degrees 31 minutes 13 seconds West 5,443.90 feet to a point having Coordinates of X = 1,765,354.02 and Y = 459,654.84; thence North 87 degrees 55 minutes 42 seconds 5,304.16 feet to a point on the east boundary of State Lease No. 22002, as amended having Coordinates of X = 1,760,053.33 and Y = 459,846.59; thence North 00 degrees 15 minutes 26 seconds West 5,416.46 feet along the east boundary of said State Lease No. 22002 to a point having Coordinates of X = 1,760,029.00 and Y = 465,263.00; thence South 88 degrees 15 minutes 35 seconds East 5,471.99 feet to the point of beginning, containing approximately **100 acres**, all as more particularly outlined on a plat on file in the Office of Mineral Resources, Department of Natural Resources. All bearings, distances and coordinates are based on Louisiana Coordinate System of 1927, (North or South Zone), where applicable.

NOTE: The above description of the Tract nominated for lease has been provided and corrected, where required, exclusively by the nomination party. Any mineral lease selected from this Tract and awarded by the Louisiana State Mineral and Energy Board shall be without warranty of any kind, either express, implied, or statutory, including, but not limited to, the implied warranties of merchantability and fitness for a particular purpose. Should the mineral lease awarded by the Louisiana State Mineral and Energy Board be subsequently modified, cancelled or abrogated due to the existence of conflicting leases, operating agreements, private claims or other future obligations or conditions which may affect all or any portion of the leased Tract, it shall not relieve the Lessee of the obligation to pay any bonus due thereon to the Louisiana State Mineral and Energy Board, nor shall the Louisiana State Mineral and Energy Board be obligated to refund any consideration paid by the Lessor prior to such modification, cancellation, or abrogation, including, but not limited to, bonuses, rentals and royalties.

Applicant: CYPRESS ENERGY PARTNERS, LLC

Bidder	Cash Payment	Price/ Acre	Rental	Oil	Gas	Other



**Legend**

- 23040012
- Active\_Leases
- Counties

NATCHITOCHES

RED RIVER

P.O.B.

RED RIVER

T11N - R9W

RED RIVER LOCK & DAM NO. 4

SL 22002

0 2,000 Feet





**TRACT 45642 - Portion of Blocks 22, and 23, Breton Sound Area, Plaquemines Parish, Louisiana**

All of the lands now or formerly constituting the beds and bottoms of all water bodies of every nature and description as to which title is vested in the State of Louisiana, together with all islands arising therein and other lands formed by accretion or by reliction, where allowed by law, excepting tax adjudicated lands, and not presently under mineral lease on April 12, 2023, situated in Plaquemines Parish, Louisiana, and more particularly described as follows: Beginning at the Southwest corner of State Lease No. 22085 having Coordinates of X = 2,729,509.92 and Y = 338,877.62; thence West 10,576.59 feet to a point on the East Line of State Lease No. 2326, as amended having Coordinates of X = 2,718,933.33 and Y = 338,877.62; thence North 10,722.38 feet along the Eastern boundary of said State Lease No. 2326 to a point having Coordinates of X = 2,718,933.33 and Y = 349,600.00; thence East 9,930.91 feet to a point having Coordinates of X = 2,728,864.24 and Y = 349,600.00; thence South 8,947.29 feet to the Northwest corner of State Lease No. 22085 having Coordinates of X = 2,728,864.24 and Y = 340,652.71; thence South 19 degrees 59 minutes 19 seconds East 1,888.87 feet along the Western boundary of said State Lease No. 22085 to the point of beginning, containing approximately **2457.67 acres**, all as more particularly outlined on a plat on file in the Office of Mineral Resources, Department of Natural Resources. All bearings, distances and coordinates are based on Louisiana Coordinate System of 1927, (North or South Zone), where applicable.

NOTE: The above description of the Tract nominated for lease has been provided and corrected, where required, exclusively by the nomination party. Any mineral lease selected from this Tract and awarded by the Louisiana State Mineral and Energy Board shall be without warranty of any kind, either express, implied, or statutory, including, but not limited to, the implied warranties of merchantability and fitness for a particular purpose. Should the mineral lease awarded by the Louisiana State Mineral and Energy Board be subsequently modified, cancelled or abrogated due to the existence of conflicting leases, operating agreements, private claims or other future obligations or conditions which may affect all or any portion of the leased Tract, it shall not relieve the Lessee of the obligation to pay any bonus due thereon to the Louisiana State Mineral and Energy Board, nor shall the Louisiana State Mineral and Energy Board be obligated to refund any consideration paid by the Lessor prior to such modification, cancellation, or abrogation, including, but not limited to, bonuses, rentals and royalties.

NOTE: The State of Louisiana does hereby reserve, and this lease shall be subject to, the imprescriptible right of surface use in the nature of a servitude in favor of the Department of Natural Resources, including its Offices and Commissions, for the sole purpose of implementing, constructing, servicing and maintaining approved coastal zone management and/or restoration projects. Utilization of any and all rights derived under this lease by the mineral lessee, its agents, successors or assigns, shall not interfere with nor hinder the reasonable surface use by the Department of Natural Resources, its Offices or Commissions, as herein above reserved.

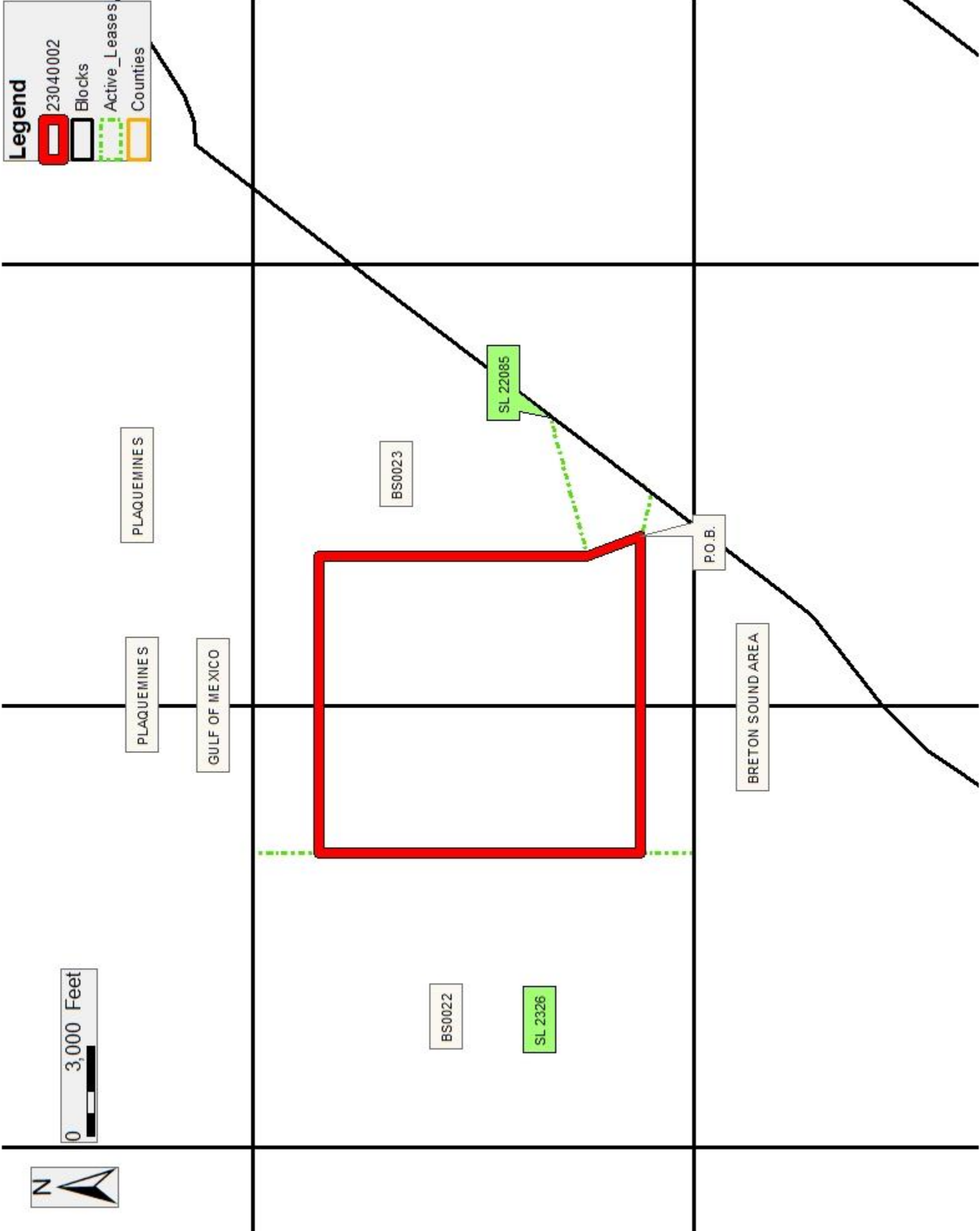
Applicant: CYPRESS ENERGY PARTNERS, LLC

Bidder	Cash Payment	Price/ Acre	Rental	Oil	Gas	Other



**Legend**

- 23040002
- Blocks
- Active\_Leases
- Countries



**TRACT 45643 - Portion of Blocks 22, 23, 26, and 27, Breton Sound Area, Plaquemines Parish, Louisiana**

All of the lands now or formerly constituting the beds and bottoms of all water bodies of every nature and description as to which title is vested in the State of Louisiana, together with all islands arising therein and other lands formed by accretion or by reliction, where allowed by law, excepting tax adjudicated lands, and not presently under mineral lease on April 12, 2023, situated in Plaquemines Parish, Louisiana, and more particularly described as follows: Beginning at the Southwest corner of State Lease No. 22085 having Coordinates of X = 2,729,509.92 and Y = 338,877.62; thence South 75 degrees 05 minutes 12 seconds East 1,515.34 feet along the Southern boundary of said State Lease No. 22085 to a point having the Coordinates of X = 2,730,974.22 and Y = 338,487.63, said point being on the Louisiana Coastline, as decreed by the Supreme Court of the United States, as determined by a Special Master appointed therein, in litigation styled *United States v. State of Louisiana et al No. 9 Original*, in 1975; thence along said Coastline the following courses: Southwesterly on a straight line to a point having Coordinates of X = 2,727,653 and Y = 334,120, Southwesterly on a straight line to a point having Coordinates of X = 2,726,852 and Y = 333,103, Southwesterly on a straight line to a point having Coordinates of X = 2,723,975 and Y = 330,868, Southwesterly on a straight line to a point having Coordinates of X = 2,722,321 and Y = 329,172 and Southwesterly on a straight line to a point having Coordinates of X = 2,721,206.00 and Y = 327,530.00; thence West 4,606.00 feet to the Southeastern corner of State Lease No. 4574, as amended, to a point having Coordinates X = 2,716,600.00 and Y = 327,530.00; thence along the Eastern Boundary of said State Lease No. 4574 the following courses: North 5,500.00 feet to a point having Coordinates X = 2,716,600.00 and Y = 333,030.00, East 2,333.33 feet to a point having Coordinates X = 2,718,933.33 and Y = 333,030.00 and North 4,050.00 feet to its Northeast corner and the Southeast corner of State Lease No. 2326, as amended having Coordinates X = 2,718,933.33 and Y = 337,080.00; thence North 1,797.62 feet along the Eastern Boundary of said State Lease No. 2326 to a point having Coordinates X = 2,718,933.33 and Y = 338,877.62; thence East 10,576.59 feet to the point of beginning, containing approximately **2,234.16 acres**, all as more particularly outlined on a plat on file in the Office of Mineral Resources, Department of Natural Resources. All bearings, distances and coordinates are based on Louisiana Coordinate System of 1927, (North or South Zone), where applicable.

NOTE: The above description of the Tract nominated for lease has been provided and corrected, where required, exclusively by the nomination party. Any mineral lease selected from this Tract and awarded by the Louisiana State Mineral and Energy Board shall be without warranty of any kind, either express, implied, or statutory, including, but not limited to, the implied warranties of merchantability and fitness for a particular purpose. Should the mineral lease awarded by the Louisiana State Mineral and Energy Board be subsequently modified, cancelled or abrogated due to the existence of conflicting leases, operating agreements, private claims or other future obligations or conditions which may affect all or any portion of the leased

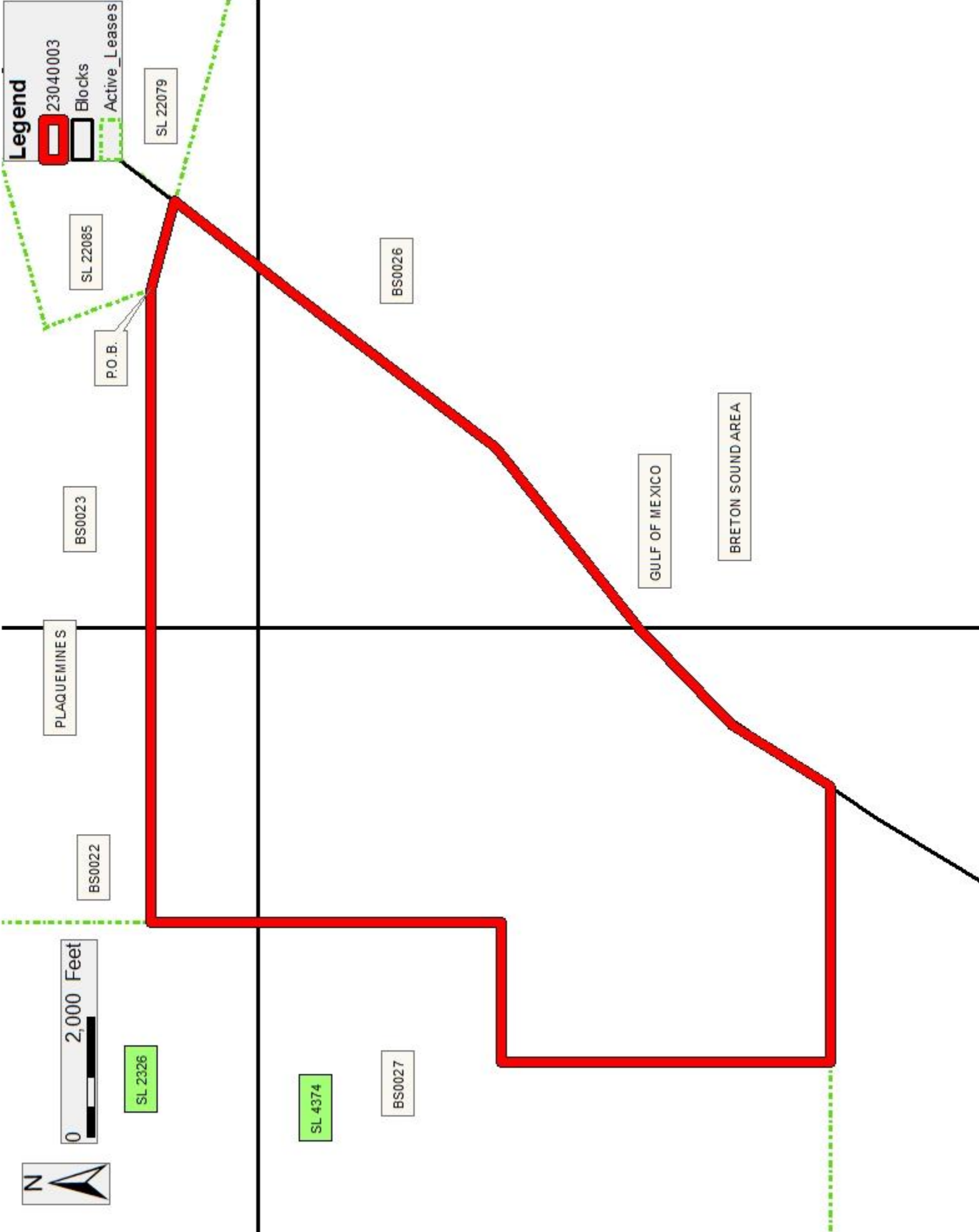
Tract, it shall not relieve the Lessee of the obligation to pay any bonus due thereon to the Louisiana State Mineral and Energy Board, nor shall the Louisiana State Mineral and Energy Board be obligated to refund any consideration paid by the Lessor prior to such modification, cancellation, or abrogation, including, but not limited to, bonuses, rentals and royalties.

NOTE: The State of Louisiana does hereby reserve, and this lease shall be subject to, the imprescriptible right of surface use in the nature of a servitude in favor of the Department of Natural Resources, including its Offices and Commissions, for the sole purpose of implementing, constructing, servicing and maintaining approved coastal zone management and/or restoration projects. Utilization of any and all rights derived under this lease by the mineral lessee, its agents, successors or assigns, shall not interfere with nor hinder the reasonable surface use by the Department of Natural Resources, its Offices or Commissions, as herein above reserved.

Applicant: CYPRESS ENERGY PARTNERS, LLC

Bidder	Cash Payment	Price/ Acre	Rental	Oil	Gas	Other





**TRACT 45644 - Portion of Blocks 27, and 38, Breton Sound Area, Plaquemines Parish, Louisiana**

All of the lands now or formerly constituting the beds and bottoms of all water bodies of every nature and description as to which title is vested in the State of Louisiana, together with all islands arising therein and other lands formed by accretion or by reliction, where allowed by law, excepting tax adjudicated lands, and not presently under mineral lease on April 12, 2023, situated in Plaquemines Parish, Louisiana, and more particularly described as follows: Beginning at a point on the West Line of Block 27, Breton Sound Area, being the Southwest corner of the State Lease No. 4574, as amended, having Coordinates of X = 2,709,100.00 and Y = 327,530.00; thence East 7,500.00 feet along the South line of said State Lease No. 4574 to the Southeast corner of said lease having Coordinates of X = 2,716,600.00 and Y = 327,530.00; thence East 4,605.98 feet to a point having Coordinates of X = 2,721,206.00 and Y = 327,530.00, said point being on the Louisiana Coastline, as decreed by the Supreme Court of the United States, as determined by a Special Master appointed therein, in litigation styled *United States v. State of Louisiana et al No. 9 Original*, in 1975; thence along said Coastline the following courses: Southwesterly in a straight line to a point having Coordinates of X = 2,720,696 and Y = 326,779; Southwesterly on a straight line to a point on the South line of said Block 27 and a point on the North line of Block 38, Breton Sound Area having Coordinates of X = 2,718,010.00 and Y = 322,330.00; Southwesterly on a straight line to a point having Coordinates of X = 2,717,012 and Y = 320,677; Southwesterly on a straight line to a point having Coordinates of X = 2,715,236 and Y = 318,391; Southwesterly on a straight line to a point having Coordinates of X = 2,714,633 and Y = 317,731; Southwesterly on a straight line to a point having Coordinates of X = 2,713,324 and Y = 316,801; Southwesterly on a straight line to a point having Coordinates of X = 2,711,772 and Y = 316,107; Southwesterly on a straight line to a point having Coordinates of X = 2,710,380 and Y = 315,995; Southwesterly on a straight line to a point on the West line of said Block 38 having Coordinates of X = 2,709,100.00 and Y = 315,555.59; thence North 6,774.41 feet along the West line of said Block 38 to its Northwest corner and the Southwest corner of said Block 27 having Coordinates of X = 2,709,100.00 and Y = 322,330.00; thence North 5,200.00 feet along the West line of said Block 27 to the point of beginning, containing approximately **2,198.33 acres**, all as more particularly outlined on a plat on file in the Office of Mineral Resources, Department of Natural Resources. All bearings, distances and coordinates are based on Louisiana Coordinate System of 1927, (North or South Zone), where applicable.

NOTE: The above description of the Tract nominated for lease has been provided and corrected, where required, exclusively by the nomination party. Any mineral lease selected from this Tract and awarded by the Louisiana State Mineral and Energy Board shall be without warranty of any kind, either express, implied, or statutory, including, but not limited to, the implied warranties of merchantability and fitness for a particular purpose. Should the mineral lease awarded by the Louisiana State Mineral and Energy Board be subsequently modified, cancelled or abrogated due to the existence of

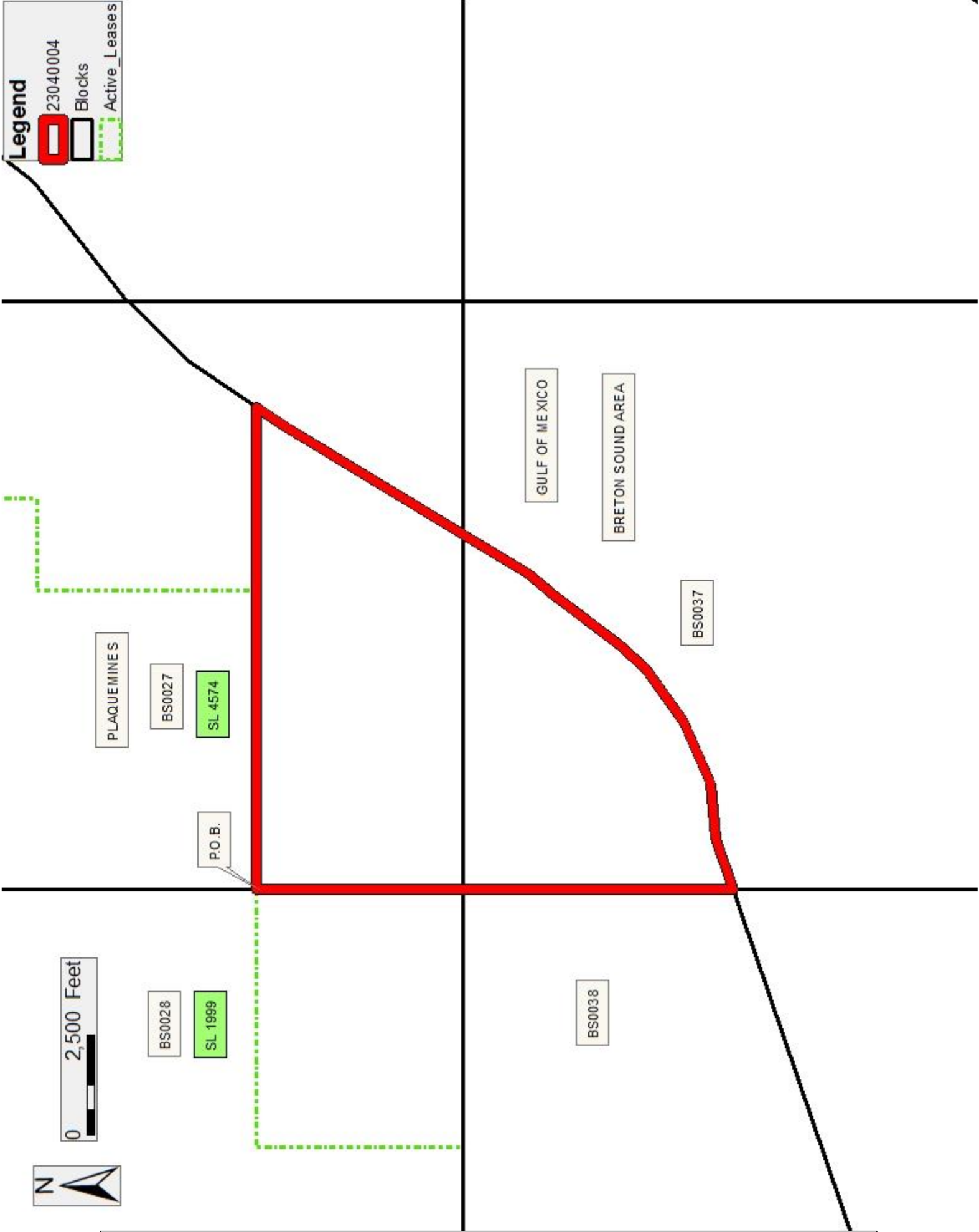
conflicting leases, operating agreements, private claims or other future obligations or conditions which may affect all or any portion of the leased Tract, it shall not relieve the Lessee of the obligation to pay any bonus due thereon to the Louisiana State Mineral and Energy Board, nor shall the Louisiana State Mineral and Energy Board be obligated to refund any consideration paid by the Lessor prior to such modification, cancellation, or abrogation, including, but not limited to, bonuses, rentals and royalties.

NOTE: The State of Louisiana does hereby reserve, and this lease shall be subject to, the imprescriptible right of surface use in the nature of a servitude in favor of the Department of Natural Resources, including its Offices and Commissions, for the sole purpose of implementing, constructing, servicing and maintaining approved coastal zone management and/or restoration projects. Utilization of any and all rights derived under this lease by the mineral lessee, its agents, successors or assigns, shall not interfere with nor hinder the reasonable surface use by the Department of Natural Resources, its Offices or Commissions, as herein above reserved.

Applicant: CYPRESS ENERGY PARTNERS, LLC

Bidder	Cash Payment	Price/ Acre	Rental	Oil	Gas	Other





**TRACT 45645 - Plaquemines Parish, Louisiana**

All of the lands now or formerly constituting the beds and bottoms of all water bodies of every nature and description as to which title is vested in the State of Louisiana, together with all islands arising therein and other lands formed by accretion or by reliction, where allowed by law, excepting tax adjudicated lands, and not presently under mineral lease on April 12, 2023, situated in Plaquemines Parish, Louisiana, and more particularly described as follows: Beginning at the Southeast corner of State Lease No. 2376 having Coordinates of X = 2,504,170.91 and Y = 271,903.69, said point also being on the Northern boundary of Tract 2 of State Lease No. 1464, as amended; thence along the boundary of said Tract 2 of said State Lease No. 1464, as amended, the following courses: North 89 degrees 15 minutes 00 seconds East 403.27 feet to a point having Coordinates of X = 2,504,574.15 and Y = 272,908.97, South 3,151.33 feet to a point having Coordinates of X = 2,504,574.15 and Y = 268,757.44, South 86 degrees 00 minutes 08 seconds West 3,000.00 feet to a point having Coordinates of X = 2,501,581.45 and Y = 268,548.29, South 00 degrees 54 minutes 20 seconds East 4,517.12 feet to a point having Coordinates of X = 2,501,652.84 and Y = 264,031.73, South 87 degrees 34 minutes 51 seconds West 969.48 feet to a point having Coordinates of X = 2,500,684.22 and Y = 263,990.81, South 87 degrees 34 minutes 56 seconds West 2,777.33 feet to a point having Coordinates of X = 2,497,909.36 and Y = 263,873.65, South 87 degrees 34 minutes 56 seconds West 1,535.11 feet to a point having Coordinates of X = 2,496,375.62 and Y = 263,808.88, North 00 degrees 54 minutes 20 seconds West 2,245.60 feet to a point having Coordinates of X = 2,496,340.13 and Y = 266,054.20; thence North 5,746.95 feet to a point having Coordinates of X = 2,496,340.13 and Y = 271,801.15, being a point on the Northern boundary of said Tract 2 of said State Lease No. 1464, as amended, as well as a point on the Southern boundary of said State Lease No. 2376; thence along the boundary of said State Lease No. 2376 and said Tract 2 of said State Lease No. 1464, as amended, North 89 degrees 14 minutes 58 seconds East 7,831.45 feet to the point of beginning, **LESS AND EXCEPT** all that portion of State Lease No. 1464, as amended, that lies within the above described tract; **LESS AND EXCEPT** IN THEIR ENTIRETY STATE LEASE NO. 22117 more particularly described as follows: Beginning at a point on the Eastern boundary of Tract 2 of State Lease No. 1464, as amended, having Coordinates of X = 2,504,574.15 and Y = 271,351.81; thence along the boundary of said Tract 2 of said State Lease No. 1464, as amended, the following courses: South 2,594.37 feet to a point having Coordinates of X = 2,504,574.15 and Y = 268,757.44, and South 86 degrees 00 minutes 08 seconds West 1,955.09 feet to a point having Coordinates of X = 2,502,623.82 and Y = 268,621.14; thence North 01 degree 28 minutes 04 seconds West 2,798.45 feet to a point having Coordinates of X = 2,502,552.13 and Y = 271,418.67; thence North 27 degrees 18 minutes 22 seconds East 182.93 feet to a point having Coordinates of X = 2,502,636.05 and Y = 271,581.22; thence North 88 degrees 34 minutes 56 seconds East 1,542.50 feet to a point having Coordinates of X = 2,504,178.07 and Y = 271,619.38; thence South 55 degrees 57 minutes 31 seconds East 477.99 feet to the point of beginning **AND LESS AND EXCEPT** IN THEIR ENTIRETY STATE LEASE NO. 22118 more particularly described as follows: Beginning at a point having Coordinates of X =

2,498,914.28 and Y = 270,061.34; thence South 27 degrees 03 minutes 47 seconds East 2,087.44 feet to a point having Coordinates of X = 2,499,864.01 and Y = 268,202.46; thence South 61 degrees 37 minutes 48 seconds West 1,583.80 feet to a point on the Northern boundary of State Lease No. 21947, having Coordinates of X = 2,498,470.43 and Y = 267,449.90, said point also being on the boundary of Tract 2 of State Lease No. 1464, as amended; thence along the boundary of said State Lease No. 1464, as amended, and said State Lease No. 21947 West 2,130.30 feet to a point having Coordinates of X = 2,496,340.13 and Y = 267,449.90; thence North 2,611.45 feet to a point having Coordinates of X = 2,496,340.13 and Y = 270,061.34; thence East 2,574.15 feet to the point of beginning. The above described tract contains approximately **419 acres**, all as more particularly outlined on a plat on file in the Office of Mineral Resources, Department of Natural Resources. All bearings, distances and coordinates are based on Louisiana Coordinate System of 1927, (North or South Zone), where applicable.

NOTE: The above description of the Tract nominated for lease has been provided and corrected, where required, exclusively by the nomination party. Any mineral lease selected from this Tract and awarded by the Louisiana State Mineral and Energy Board shall be without warranty of any kind, either express, implied, or statutory, including, but not limited to, the implied warranties of merchantability and fitness for a particular purpose. Should the mineral lease awarded by the Louisiana State Mineral and Energy Board be subsequently modified, cancelled or abrogated due to the existence of conflicting leases, operating agreements, private claims or other future obligations or conditions which may affect all or any portion of the leased Tract, it shall not relieve the Lessee of the obligation to pay any bonus due thereon to the Louisiana State Mineral and Energy Board, nor shall the Louisiana State Mineral and Energy Board be obligated to refund any consideration paid by the Lessor prior to such modification, cancellation, or abrogation, including, but not limited to, bonuses, rentals and royalties.

NOTE: The State of Louisiana does hereby reserve, and this lease shall be subject to, the imprescriptible right of surface use in the nature of a servitude in favor of the Department of Natural Resources, including its Offices and Commissions, for the sole purpose of implementing, constructing, servicing and maintaining approved coastal zone management and/or restoration projects. Utilization of any and all rights derived under this lease by the mineral lessee, its agents, successors or assigns, shall not interfere with nor hinder the reasonable surface use by the Department of Natural Resources, its Offices or Commissions, as herein above reserved.



Applicant: OIL LAND SERVICES, INC

Bidder	Cash Payment	Price/ Acre	Rental	Oil	Gas	Other

Legend

23040001

Active Leases

Freeze Statute



0 2,500 Feet



PLAQUEMINES

ROBINSON CANAL

SL 2376

P.O.B.

SL 22117

SL 22116

LAKE WASHINGTON

BILLET BAY

BARATARIA BAY

SL 1464

SL 22118