

TRACT 45934 - Caddo Parish, Louisiana

All of the lands now or formerly constituting the beds and bottoms of all water bodies of every nature and description as to which title is vested in the State of Louisiana, together with all islands arising therein and other lands formed by accretion or by reliction, where allowed by law, excepting tax adjudicated lands, and not presently under mineral lease on June 11, 2025, situated in Caddo Parish, Louisiana, and more particularly described as follows: Beginning at a point being the same as the Southwest corner of State Lease No. 19349, as amended, and the Northwest Corner of State Lease No. 11155, as amended, having Coordinates of X = 1,630,100.00 and Y = 638,800.00; thence South 2,498.71 feet along the Western boundary of State Lease No. 11155, as amended, to a point being the Northwestern corner of State Lease No. 22093, as amended, having Coordinates of X = 1,630,100.00 and Y = 636,301.29; thence Southerly approximately 2,335 feet along the Western boundary of State Lease No. 22093, to a point being the Northwestern corner of State Lease No. 19928, as amended; thence Southerly approximately 2,149 feet along the Western boundary of State Lease No. 19928, as amended, to a point being the Easternmost Northeastern corner of State Lease No. 19757; thence Westerly approximately 5,223 feet along the Northern boundary of State Lease No. 19757, to a point being the Southeastern corner of State Lease No. 6316, as amended; thence along the boundaries of said State Lease No. 6316, as amended, the following courses: Northerly approximately 5,349 feet and Westerly approximately 4,649 feet to its Northwestern corner; thence Northerly approximately 11,168 feet to a point having Coordinates of X = 1,620,279.31 and Y = 648,500.33; thence South 89 degrees 23 minutes 49 seconds East 9,821.85 feet to a point on the western boundary of State Lease No. 19349, as amended, having Coordinates of X = 1,630,100.62 and Y = 648,396.97; thence South 00 degrees 00 minutes 13 seconds West 9,596.97 feet along the Western boundary of State Lease No. 19349, as amended, to the point of beginning, **LESS AND EXCEPT** that portion, if any, of State Lease No. 6316, as amended, State Lease No. 11155, as amended, State Lease No. 19349, as amended, State Lease No. 19757, State Lease No. 19928, and State Lease No. 22093, that may lie within the above described tract, (This tract includes only waterbottoms claimed and owned by the state and specifically excludes any land which the state may claim or own and to which the mineral rights are vested in the state), containing approximately **55 acres**, all as more particularly outlined on a plat on file in the Office of Mineral Resources, Department of Natural Resources. All bearings, distances and coordinates are based on Louisiana Coordinate System of 1927, (North or South Zone), where applicable.

NOTE: The above description of the Tract nominated for lease has been provided and corrected, where required, exclusively by the nomination party. Any mineral lease selected from this Tract and awarded by the Louisiana State Mineral and Energy Board shall be without warranty of any kind, either express, implied, or statutory, including, but not limited to, the implied warranties of merchantability and fitness for a particular purpose. Should the mineral lease awarded by the Louisiana State Mineral and Energy Board be subsequently modified, cancelled or abrogated due to the existence of

conflicting leases, operating agreements, private claims or other future obligations or conditions which may affect all or any portion of the leased Tract, it shall not relieve the Lessee of the obligation to pay any bonus due thereon to the Louisiana State Mineral and Energy Board, nor shall the Louisiana State Mineral and Energy Board be obligated to refund any consideration paid by the Lessor prior to such modification, cancellation, or abrogation, including, but not limited to, bonuses, rentals and royalties.

NOTE: The Office of Mineral Resources will require a minimum bonus of \$2100 per acre and a minimum royalty of 25%.

Applicant: STAFF OFFICE OF MINERAL RESOURCES

Bidder	Cash Payment	Price/ Acre	Rental	Oil	Gas	Other

Legend

25060012



Active_Leases



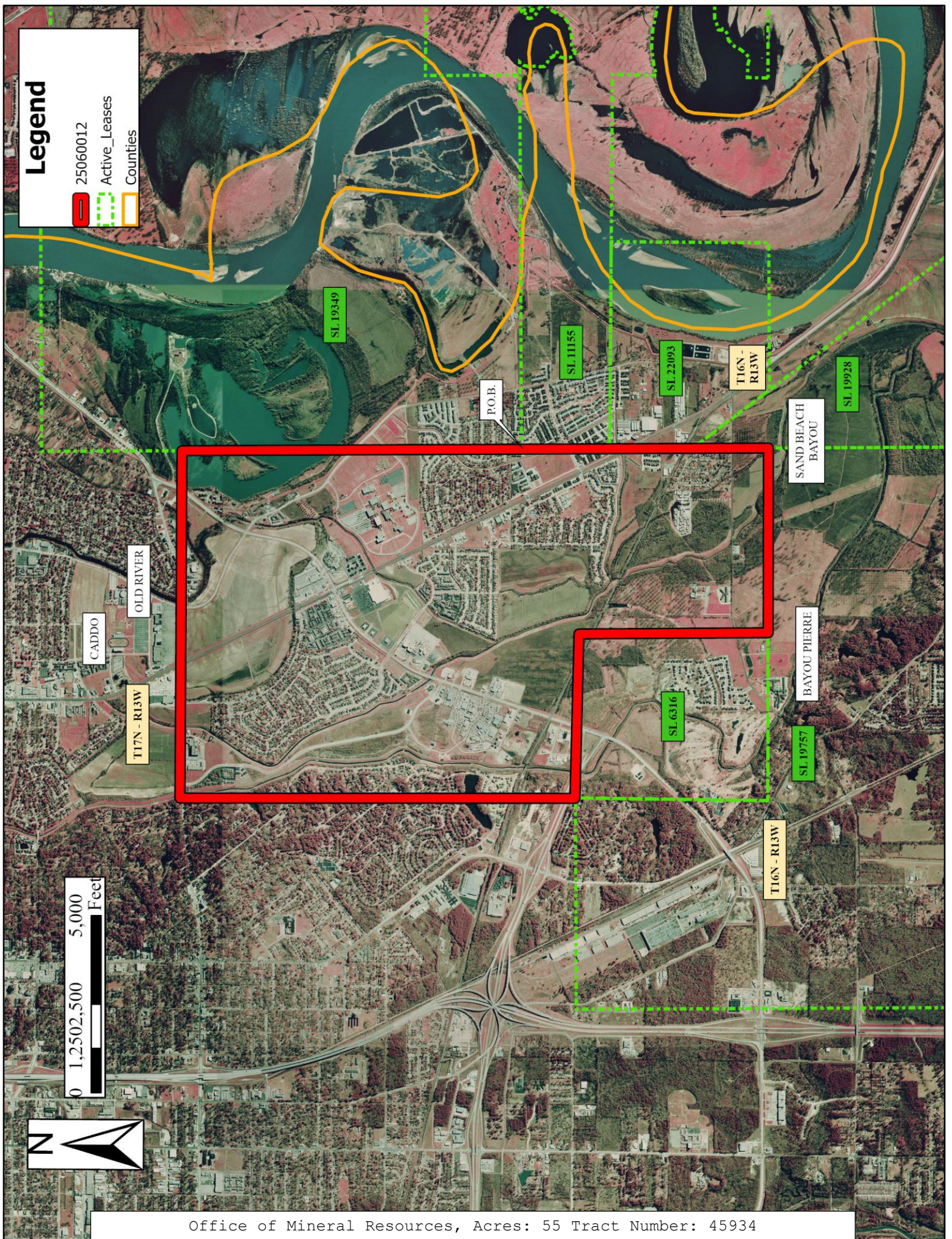
Counties



0 1,250,500 5,000 Feet



Office of Mineral Resources, Acres: 55 Tract Number: 45934



TRACT 45935 - Bossier Parish, Louisiana

All of the lands now or formerly constituting the beds and bottoms of all water bodies of every nature and description as to which title is vested in the State of Louisiana, together with all islands arising therein and other lands formed by accretion or by reliction, where allowed by law, excepting tax adjudicated lands, and not presently under mineral lease on June 11, 2025, situated in Bossier Parish, Louisiana, and more particularly described as follows: Beginning at a point common to State Lease No. 20445, as amended and State Lease No. 22194 having Coordinates of X = 1,681,099.25 and Y = 609,239.99; thence West approximately 1,246 feet along the North boundary of said State Lease No. 22194 to a point of intersection with the East boundary of State Lease No. 5849; thence Northerly approximately 4,984 feet along the East boundary of said State Lease No. 5849 to a point of intersection with the South boundary of State Lease No. 18244; thence East approximately 2,807 feet along the Southern boundary of said State Lease No. 18244 to a point of intersection with A0403 having Coordinates of X = 1,682,813.21 and Y = 614,200.00; thence South 01 degrees 19 minutes 22 seconds West approximately 4,913 feet along the West boundary of said A0403 to a point of intersection with the North boundary of said State Lease No. 20445; thence Westerly along the North boundary of said State Lease No. 20445 approximately 1,600 feet to a point and corner and Southerly approximately 48 to the point of beginning, **LESS AND EXCEPT** any and all portions of State Lease No. 5849 and Operating Agreement A0403, containing approximately **8.874 acres**, all as more particularly outlined on a plat on file in the Office of Mineral Resources, Department of Natural Resources. All bearings, distances and coordinates are based on Louisiana Coordinate System of 1927, (North or South Zone), where applicable.

NOTE: The above description of the Tract nominated for lease has been provided and corrected, where required, exclusively by the nomination party. Any mineral lease selected from this Tract and awarded by the Louisiana State Mineral and Energy Board shall be without warranty of any kind, either express, implied, or statutory, including, but not limited to, the implied warranties of merchantability and fitness for a particular purpose. Should the mineral lease awarded by the Louisiana State Mineral and Energy Board be subsequently modified, cancelled or abrogated due to the existence of conflicting leases, operating agreements, private claims or other future obligations or conditions which may affect all or any portion of the leased Tract, it shall not relieve the Lessee of the obligation to pay any bonus due thereon to the Louisiana State Mineral and Energy Board, nor shall the Louisiana State Mineral and Energy Board be obligated to refund any consideration paid by the Lessor prior to such modification, cancellation, or abrogation, including, but not limited to, bonuses, rentals and royalties.

Applicant: LEE PROPERTIES

Bidder	Cash Payment	Price/ Acre	Rental	Oil	Gas	Other

Legend

25060003



Active Leases



0 500 1,000 2,000 Feet



FLAT RIVER

T16N - R12W

T16N - R11W

A0403

BOSSIER

SL 18244

SL 20445

P.O.B.

SL 22194

TRACT 45936 - Portion of Block 49, Main Pass Area, Revised, Plaquemines Parish, Louisiana

All of the lands now or formerly constituting the beds and bottoms of all water bodies of every nature and description as to which title is vested in the State of Louisiana, together with all islands arising therein and other lands formed by accretion or by reliction, where allowed by law, excepting tax adjudicated lands, and not presently under mineral lease on June 11, 2025, situated in Plaquemines Parish, Louisiana, and more particularly described as follows: Beginning at a point having Coordinates of X = 2,623,679.07 and Y = 269,108.99; thence South 85 degrees 19 minutes 28 seconds East 398.22 feet to a point having Coordinates of X = 2,624,075.96 and Y = 269,076.53; thence South 70 degrees 51 minutes 18 seconds East 132.46 feet to a point having Coordinates of X = 2,624,201.10 and Y = 269,033.09; thence North 25 degrees 04 minutes 04 seconds East 87.12 feet to a point having Coordinates of X = 2,624,238.01 and Y = 269,112.00; thence South 75 degrees 03 minutes 24 seconds East 3,094.66 feet to a point having Coordinates of X = 2,627,228.01 and Y = 268,314.00; thence South 11 degrees 32 minutes 36 seconds West 2,213.78 feet to a point having Coordinates of X = 2,626,785.02 and Y = 266,145.00; thence South 52 degrees 25 minutes 53 seconds West 1,443.31 feet to a point having Coordinates of X = 2,625,641.01 and Y = 265,265.00; thence North 85 degrees 09 minutes 19 seconds West 1,358.24 feet to a point having Coordinates of X = 2,624,287.63 and Y = 265,379.71; thence South 42 degrees 53 minutes 13 seconds West 59.51 feet to a point having Coordinates of X = 2,624,427.13 and Y = 265,336.10; thence North 42 degrees 29 minutes 59 seconds West 839.82 feet to a point having Coordinates of X = 2,623,679.76 and Y = 265,955.29; thence North 00 degrees 00 minutes 41 seconds West 1,185.02 feet to a point having Coordinates of X = 2,623,679.52 and Y = 267,140.31; thence North 00 degrees 00 minutes 47 seconds West 1,968.68 feet to the point of beginning, containing approximately **216.50 acres**, all as more particularly outlined on a plat on file in the Office of Mineral Resources, Department of Natural Resources. All bearings, distances and coordinates are based on Louisiana Coordinate System of 1927, (North or South Zone), where applicable.

NOTE: The above description of the Tract nominated for lease has been provided and corrected, where required, exclusively by the nomination party. Any mineral lease selected from this Tract and awarded by the Louisiana State Mineral and Energy Board shall be without warranty of any kind, either express, implied, or statutory, including, but not limited to, the implied warranties of merchantability and fitness for a particular purpose. Should the mineral lease awarded by the Louisiana State Mineral and Energy Board be subsequently modified, cancelled or abrogated due to the existence of conflicting leases, operating agreements, private claims or other future obligations or conditions which may affect all or any portion of the leased Tract, it shall not relieve the Lessee of the obligation to pay any bonus due thereon to the Louisiana State Mineral and Energy Board, nor shall the Louisiana State Mineral and Energy Board be obligated to refund any consideration paid by the Lessor prior to such modification, cancellation, or abrogation, including, but not limited to, bonuses, rentals and royalties.

NOTE: The State of Louisiana does hereby reserve, and this lease shall be subject to, the imprescriptible right of surface use in the nature of a servitude in favor of the Department of Natural Resources, including its Offices and Commissions, for the sole purpose of implementing, constructing, servicing and maintaining approved coastal zone management and/or restoration projects. Utilization of any and all rights derived under this lease by the mineral lessee, its agents, successors or assigns, shall not interfere with nor hinder the reasonable surface use by the Department of Natural Resources, its Offices or Commissions, as herein above reserved.

NOTE: This tract is located in an area designated by the Louisiana Legislature or the Wildlife and Fisheries Commission as a Public Oyster Seed Ground, Reservation, or area of Calcasieu or Sabine Lake. Proposed projects occurring in these areas will be evaluated on a case by case basis by Louisiana Department of Wildlife & Fisheries. Modifications to proposed project features including, but not limited to, access routes, well sites, flowlines, and appurtenant structures maybe required by the Louisiana Department of Wildlife and Fisheries. In addition, compensatory mitigation will be required to offset unavoidable habitat impacts.

Applicant: ROBERT A. SCHROEDER, INC.

Bidder	Cash Payment	Price/ Acre	Rental	Oil	Gas	Other

Legend

25060004

Blocks

0 500 1,000 2,000 Feet



PLAQUEMINES

MP0049

T19S - R18E

BRETON SOUND

PRICE CASE

P.O.B.

Main Pass Area, Revised